



# OUTSOLE CATALOG

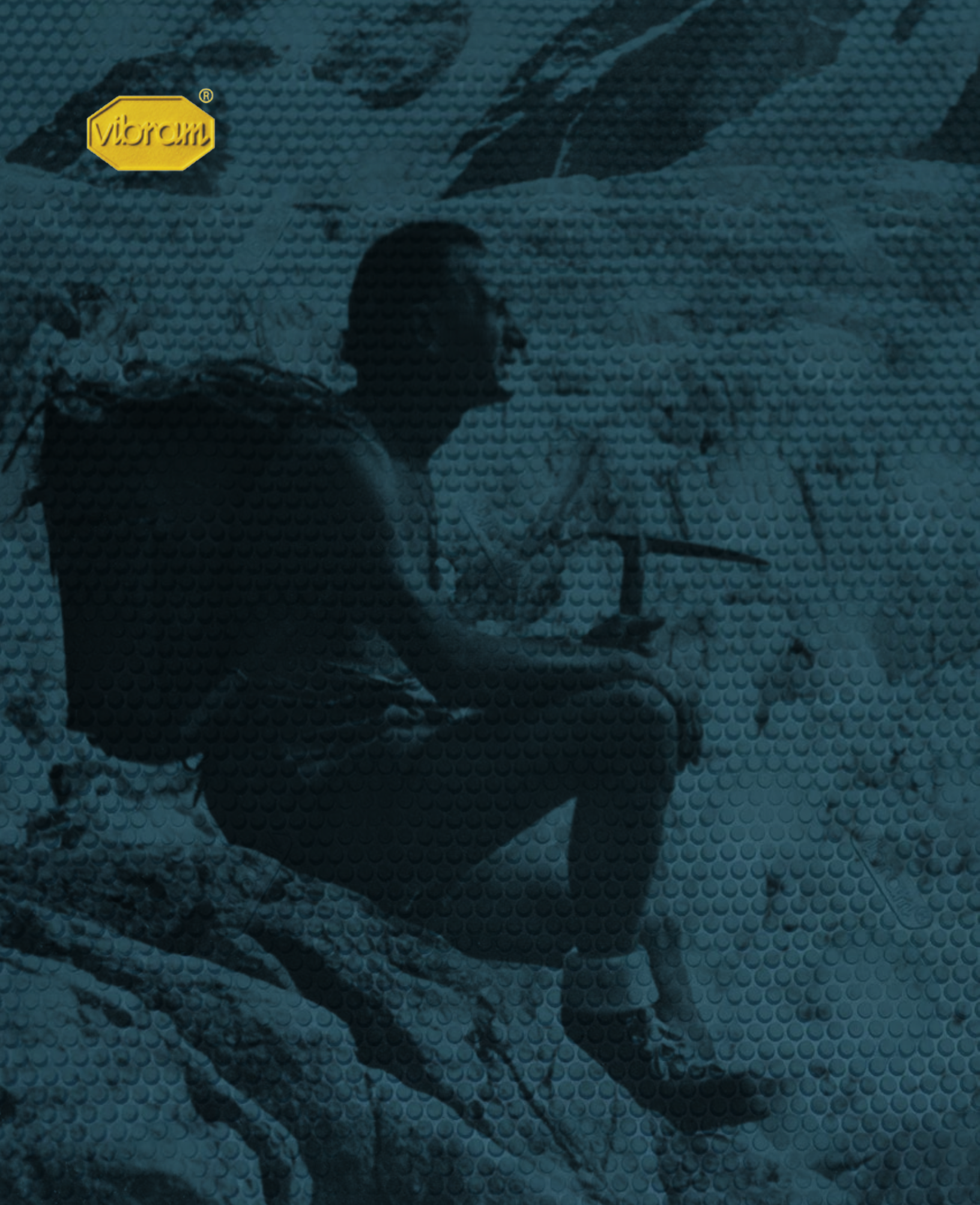
*CHINA // 2017*

CELEBRATING

**80 YEARS** OF CARRARMATO

/ since 1937 /





CELEBRATING

## 80 YEARS OF CARRARMATO

**80 YEARS AGO** Vibram established **THE CARRARMATO SOLE**, famously revolutionizing mountaineering and becoming the footprint symbol known around the world.



There are ideas that have changed the world. One of these is the legendary CARRARMATO sole — literally the “Tank” sole, imagined, studied and created more than 75 years ago by Vitale Bramani, Academic of the Italian Alpine Club and founder of Vibram®. In an effort to increase hiker safety, Bramani designed the CARRARMATO sole in 1937. Made of vulcanized rubber, it was an ingenious expression of the unique quality of Italian-made products, soon to become an icon of modern design around the world. The CARRARMATO sole has literally revolutionized the entire footwear industry.

*-Since 1937-*

## CELEBRATING 80 YEARS OF CARRARMATO

*The iconic sole design*

- **General:** Large contact area for grip on rocks
- **Lugs:** Multiple hexagonal lugs for sure-footed traction
- **Self Cleaning:** Mud clearing channels for safety on heavy grounds
- **Toe, heel:** Strong/undercut heel for downhill braking performance
- **Shank:** Engraved shank for better grip on uneven ground



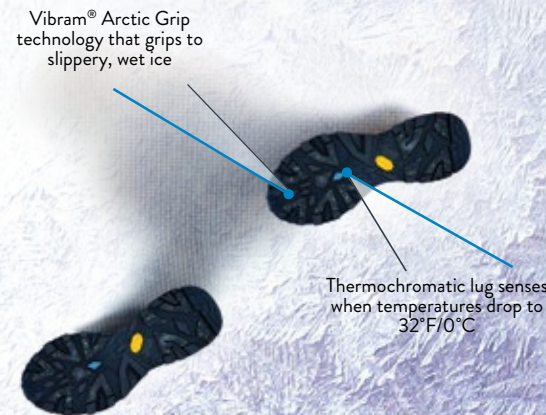
INTRODUCING  
**Vibram® Arctic Grip**

THE MOST ADVANCED COLD WEATHER GRIPPING SYSTEM EVER CREATED BY VIBRAM.

- Innovative Technology specifically engineered and designed to perform on wet ice
- Unique polymer blend coupled with an advanced filler system/new processing technique
- Paired with Vibram Ictetrek, which yields Vibram's best grip on dry ice
- Engineered for low temperature use. Offers Vibram performance, quality and durability.
- Improved grip on cold, icy or snowy surfaces compared to existing Vibram soles
- Thermochromatic lug on each sole which turns white to blue as the temperature near 0 degrees celsius (serves as an indicator to let the wearer know temperature is low enough for ice formulation)



**ARCTIC GRIP**  
WET ICE TECHNOLOGY



<p><b>GOTHAM CITY</b> ARCTIC GRIP</p> <p><b>CASUAL</b> See page 46</p>	<p><b>CHRISTY</b> ARCTIC GRIP</p> <p><b>CASUAL</b> See page 46</p>	<p><b>YELLOW</b> ARCTIC GRIP</p> <p><b>SAMPLES</b> See page 47</p>	<p><b>RETRORUN</b> ARCTIC GRIP</p> <p><b>SAMPLES</b> See page 77</p>	<p><b>WINTER FASHION</b> ARCTIC GRIP</p> <p><b>SAMPLES</b> See page 77</p>
--	--	--	--	--

# GROUNDBREAKING GRIP

UNPARALLELED PERFORMANCE ON ALL TERRAIN IN WET AND DRY CONDITIONS.



## VIBRAM MEGAGRIP

Our most advanced technology specifically engineered for grip on wet and dry surfaces. Traction, durability and quality the world depends on.







# VTC

An important milestone in Vibram's continuing development and innovation occurred in 2009 with the opening of Vibram's Technological Center in Guangzhou, China. The VTC is equipped with the latest research instruments and pioneering methods for in-vivo testing of new products and compounds. It is a shining symbol of Vibram's commitment to research and innovation.

Powered by the Performing Test Center, a hub of inventive real-world simulations, the VTC has the dual mission of expanding the range of Vibram technologies, and reinforcing development cooperation with our many hundreds of partner brands.





# What's New?

## Hello! Welcome to our new catalog!

We have updated many descriptions to include the US or Italy's production number if the sole is produced in either country; you will see it called out in parentheses as "168K (1685) Mombello," for example. We have also included MOQ s where applicable.

### NEW SAMPLE SOLES:

S708 Cross, S1323 Menego, S1389 Leicester, S1457 Bristol Lake, R519 Outdoor Athletic Carrarmato, 661C Riding, S1460 Ligno, S1318 Retro Run Arctic Grip, S1269 Winter Fashion Arctic Grip, S1439 Ciglione, S1437 Ciglione, S1475 Inverness, S1508 Prism, LB037 Flow Genius, S1500 Bacon, S1576 Fish & Chips

### NEW PRODUCTION SOLES:

**Outdoor:** 215C Taku Midsole, 406C Thin Kletterlift, S1324 Maerengue, S918 Brandy

**Casual:** 477B Freeride, 747C Perla, 349C Voltaggio, 515C Everest, 705C Marbrani, Christy Arctic Grip, 006AG Gotham City Arctic Grip, S1100 Christy Cut, S1459 Optilite, S1461 Plump, S1559 Ripple, Z197 Sandal Slide, 007AG Yellow Arctic Grip

**Soling Sheets:** 696C Gigicamo

—Team Vibram

## CONTENTS

<i>OUTDOOR</i>	<i>01</i>	<i>SOLING SHEETS</i>	<i>49</i>
<i>WORK/INDUSTRIAL</i>	<i>21</i>	<i>SAMPLES</i>	<i>57</i>
<i>CASUAL</i>	<i>30</i>	<i>APPENDIX</i>	<i>79</i>





# OUTDOOR





### 1029 SEBOLET NEW

PRODUCTION CODE: 1029  
DESCRIPTION: BLOCKER  
COMPOUND: SOLID RUBBER  
SIZES: 37, 39, 41, 43, 45, 47, 49



### 1033 WINKLER

PRODUCTION CODE: 1033  
DESCRIPTION: BLOCKER  
COMPOUND: SOLID RUBBER  
SIZES: 37/38, 39/40, 41/42, 43/44, 45/46



### 148K KLETTERLIFT

PRODUCTION CODE: 148K  
DESCRIPTION: BLOCKER  
COMPOUND: SOLID RUBBER  
SIZES: US: 7, 8, 9, 10, 11, 12, 13, 14, 15, 16, 17, 18



### 165K TRAIL RUN

SAMPLE CODE: Q075  
DESCRIPTION: NET FIT  
COMPOUND: SOLID RUBBER  
SIZES: 35, 36, 37, 38, 39, 40, 41, 42, 43, 44, 45, 46, 47.5, 48.5



### 114K BOMBA

PRODUCTION CODE: 114K  
DESCRIPTION: NET FIT  
COMPOUND: SOLID RUBBER  
SIZES: 35, 36, 37, 38, 39, 40, 41, 42, 43, 44, 45, 46, 47.5, 48.5



### 132K MONTAGNA

PRODUCTION CODE: 132K  
DESCRIPTION: BLOCKER  
COMPOUND: SOLID RUBBER  
SIZES: US: 3, 5, 7, 8, 9, 10, 11, 12, 13, 15, 16, 17  
NOTE: FOREPART THICKNESS: 12MM / HEEL THICKNESS: 30MM



### 168K (1685) MOMBELLO

PRODUCTION CODE: 168K  
DESCRIPTION: BLOCKER  
COMPOUND: SOLID RUBBER  
SIZES: 6, 7, 8, 9, 10, 11, 12, 13, 14



### 177K LITE RUN

SAMPLE CODE: Q068  
DESCRIPTION: NET FIT  
COMPOUND: SOLID RUBBER  
SIZES: 36, 37, 38, 39, 40, 41, 42, 43, 44, 45, 46, 47, 48.5



### 132W ROCCIA DONNA

PRODUCTION CODE: 132W  
DESCRIPTION: BLOCKER  
COMPOUND: SOLID RUBBER  
SIZES: WOMEN'S US: 6.5, 7.5, 8.5, 9.5, 10.5, 11.5, 12.5



### 140K SNOWSHOE

SAMPLE CODE: Q140  
DESCRIPTION: CUPSOLE  
COMPOUND: SOLID RUBBER  
SIZES: 36.5, 38, 39, 40, 41, 42, 43, 44, 45, 46, 47.5



### 200K DIABLERET

PRODUCTION CODE: 200K  
DESCRIPTION: RUBBER O/S  
COMPOUND: SOLID RUBBER  
SIZES: UK: 3, 4, 5, 6, 7, 8, 9, 10, 11, 12, 13, 14



### 236K NEW RUNNER

SAMPLE CODE: Q093  
DESCRIPTION: BLOCKER  
COMPOUND: SOLID RUBBER  
SIZES: UK: 2, 3, 4, 5, 6, 7, 8, 9, 10, 11, 12, 13





### 253K MULTISPORT

SAMPLE CODE: Q105  
DESCRIPTION: NET FIT  
COMPOUND: SOLID RUBBER + EVA MIDSOLE  
SIZES: US: 3, 4, 5, 6, 7, 8, 9, 10, 11, 12, 13, 14, 15, 16



### 256K WATERSPORT

SAMPLE CODE: Q106  
DESCRIPTION: NET FIT  
COMPOUND: SOLID RUBBER  
SIZES: US: 3, 4, 5, 6, 7, 8, 9, 10, 11, 12, 13.5



### 445K HIKING KID

SAMPLE CODE: Q243  
DESCRIPTION: CUPSOLE  
COMPOUND: SOLID RUBBER  
SIZES: 24.5, 26, 27.5, 29, 30, 31, 32, 33, 34, 35, 36, 37, 38, 39, 40.5



### 458K WINGS

SAMPLE CODE: Q209  
DESCRIPTION: NET FIT  
COMPOUND: SOLID RUBBER + EVA MIDSOLE  
SIZES: UK: 2, 3, 4, 5, 6, 7, 8, 9, 10, 11, 12



### 268K VERSA TRAKS

SAMPLE CODE: Q127  
DESCRIPTION: NET FIT  
COMPOUND: SOLID RUBBER  
SIZES: 8, 9, 10, 11, 12, 13, 14



### 289K PLANET

SAMPLE CODE: Q151  
DESCRIPTION: NET FIT  
COMPOUND: SOLID RUBBER + EVA MIDSOLE  
SIZES: UK: 3, 4, 5, 6, 7, 8, 9, 10, 11, 12, 13, 14



### 460K HIKING MAN

SAMPLE CODE: Q262  
DESCRIPTION: CUPSOLE  
COMPOUND: SOLID RUBBER  
SIZES: 36.5, 38, 39, 40, 41, 42, 43, 44, 45, 46, 47.5, 48, 49



### 487K FASTER

SAMPLE CODE: Q285  
DESCRIPTION: NET FIT  
COMPOUND: SOLID RUBBER + EVA MIDSOLE + TPU  
SIZES: UK: 2, 2.5, 3, 4, 5, 6, 7, 8, 9, 10, 11, 12, 13



### 401K METEOR

SAMPLE CODE: Q166  
DESCRIPTION: NET FIT  
COMPOUND: SOLID RUBBER + EVA MIDSOLE  
SIZES: UK: 6, 7, 8, 9, 10, 11, 12



### 406K SPIDER

SAMPLE CODE: Q181  
DESCRIPTION: NET FIT  
COMPOUND: SOLID RUBBER  
SIZES: UK: 2/3, 4/5, 6/7, 8/9, 10/11, 12/13



### 494K YACHT BOOT

SAMPLE CODE: Q291  
DESCRIPTION: NET FIT  
COMPOUND: SOLID RUBBER + EVA MIDSOLE  
SIZES: 3.5, 4.5, 5.5, 7, 8, 9, 10, 11.5, 13.5, 15



### 505K EYE SOLE

SAMPLE CODE: Q312  
DESCRIPTION: CUPSOLE  
COMPOUND: SOLID RUBBER  
SIZES: WOMEN'S: 36, 37, 38, 39, 40  
MEN'S: 40, 41, 42, 43, 44, 45, 46.5





**520K MARS**

SAMPLE CODE: Q335  
DESCRIPTION: NET FIT  
COMPOUND: SOLID RUBBER + EVA MIDSOLE  
SIZES: UK: 3, 4, 5, 6, 7, 8, 9, 10, 11, 12, 13, 14, 15



**521K PLATINUM**

SAMPLE CODE: Q345  
DESCRIPTION: NET FIT  
COMPOUND: SOLID RUBBER  
SIZES: 39, 40, 41, 42, 43, 44, 45, 46



**590K MTN BIKE**

SAMPLE CODE: Q396  
DESCRIPTION: NET FIT  
COMPOUND: SOLID RUBBER + NYLON CLEAT + RB CLEAR COVER  
SIZES: 37, 38, 39, 40, 41, 42, 43, 44, 45, 46, 47



**596K COUGAR KID**

SAMPLE CODE: Q456  
DESCRIPTION: CUPSOLE  
COMPOUND: SOLID RUBBER  
SIZES: 27.5, 29, 30, 31, 32, 33, 34, 35



**522M/W COUGAR**

SAMPLE CODE: Q333  
DESCRIPTION: NET FIT  
COMPOUND: SOLID RUBBER + EVA MIDSOLE  
SIZES: UK WOMEN'S: 2, 3, 4, 5, 6, 7  
UK MEN'S: 6, 7, 8, 9, 10, 11, 12, 13, 14, 15, 16



**564K SKELETON TREK**

SAMPLE CODE: Q169  
DESCRIPTION: NET FIT  
COMPOUND: SOLID RUBBER + EVA MIDSOLE  
SIZES: US: 5.25, 6.25, 7.25, 8.25, 9.5, 10.25, 11.25, 12.25, 13.5, 14.5



**599K WATER SOLE**

SAMPLE CODE: Q444  
DESCRIPTION: NET FIT  
COMPOUND: SOLID RUBBER + EVA MIDSOLE  
SIZES: UK: 4, 5, 6, 7, 8, 9, 10, 11, 12, 13, 14



**607K VIKING**

SAMPLE CODE: Q493  
DESCRIPTION: CUPSOLE  
COMPOUND: SOLID RUBBER  
SIZES: 35, 36.5, 38, 39, 40, 41, 42, 43, 44, 45, 46, 47.5, 49, 50



**565K ANANASI**

SAMPLE CODE: Q410  
DESCRIPTION: NET FIT  
COMPOUND: SOLID RUBBER + EVA MIDSOLE  
SIZES: UK: 2.5, 3.5, 4, 5, 6, 7, 9, 10, 11, 12, 13, 15



**569K AXIS**

SAMPLE CODE: Q392  
DESCRIPTION: NET FIT  
COMPOUND: SOLID RUBBER + EVA MIDSOLE  
SIZES: 3, 4, 5, 6, 7, 8, 9, 10, 11, 12, 13



**625K PREDATOR**

SAMPLE CODE: Q527  
DESCRIPTION: BLOCKER  
COMPOUND: SOLID RUBBER  
SIZES: UK: 2, 3, 4, 5, 6, 7, 8, 9, 10, 11, 12, 13



**628K (1206) TSAVO**

PRODUCTION CODE: 628K  
DESCRIPTION: BLOCKER  
COMPOUND: SOLID RUBBER  
SIZES: UK: 3, 4, 5, 6, 7, 8, 9, 10, 11, 12, 13, 14, 15, 16





**635K GLOBETROTTER**

SAMPLE CODE: Q495  
DESCRIPTION: NET FIT  
COMPOUND: SOLID RUBBER + POLYETHER MIDSOLE  
SIZES: UK: 4, 5, 6, 7, 8, 9, 10, 11, 12, 13



**659K HIGH SPEED**

SAMPLE CODE: Q590  
DESCRIPTION: NET FIT  
COMPOUND: SOLID RUBBER + EVA MIDSOLE + ESS  
SIZES: UK: 3, 4, 5, 6, 7, 8, 9, 10, 11, 12, 13, 14



**729K MULAZ**

PRODUCTION CODE: 729K  
DESCRIPTION: BLOCKER  
COMPOUND: SOLID RUBBER  
SIZES: UK: 4, 6, 8, 10, 12, 14



**738K CHESIRECAT**

SAMPLE CODE: Q680  
DESCRIPTION: NET FIT  
COMPOUND: SOLID RUBBER + EVA MIDSOLE  
SIZES: UK: 3, 4, 5, 6, 7, 8, 9, 10, 11, 12, 13, 14



**672K PAW KID**

SAMPLE CODE: Q606  
DESCRIPTION: CUPSOLE  
COMPOUND: SOLID RUBBER  
SIZES: 25.5, 27.5, 29, 30, 31, 32, 33, 34, 35, 36, 37, 38, 39, 40.5, 41.5



**680K FRICTION SANDAL**

SAMPLE CODE: Q599  
DESCRIPTION: NET FIT  
COMPOUND: SOLID RUBBER + EVA MIDSOLE  
SIZES: UK: 2, 3, 4, 5, 6, 7, 8, 9, 10, 11, 12, 13



**748K TURTLE KIDS**

SAMPLE CODE: Q722  
DESCRIPTION: CUPSOLE  
COMPOUND: SOLID RUBBER  
SIZES: 27.5, 29, 30, 31, 32, 33, 34, 35



**761K SORAPISS**

SAMPLE CODE: Q745  
DESCRIPTION: NET FIT  
COMPOUND: SOLID RUBBER + POLYETHER MIDSOLE  
SIZES: 35.5, 36.5, 38, 39, 40, 41, 42, 43, 44, 45, 46, 47.5



**687K CRISTAL**

SAMPLE CODE: Q628  
DESCRIPTION: CUPSOLE  
COMPOUND: SOLID RUBBER  
SIZES: UK: 3.5, 5, 6, 7, 8, 9, 10, 11, 12, 13



**695K HUGOLF**

SAMPLE CODE: Q645  
DESCRIPTION: NET FIT  
COMPOUND: SOLID RUBBER  
SIZES: 35, 36, 37, 38, 39, 40, 41, 42, 43, 44, 45, 46, 47, 48



**762K FELL RUNNING**

SAMPLE CODE: Q683  
DESCRIPTION: NET FIT  
COMPOUND: SOLID RUBBER + EVA MIDSOLE + TPU  
SIZES: UK: 2.5, 3, 4, 5, 6, 7, 8, 9, 10, 11, 12, 13



**770K CHEETAH**

SAMPLE CODE: Q755  
DESCRIPTION: CUPSOLE  
COMPOUND: SOLID RUBBER  
SIZES: UK: 4, 5, 6, 7, 8, 9, 10, 11, 12, 13, 14, 15





**786K STONEFLY**  
 SAMPLE CODE: Q817  
 DESCRIPTION: BLOCKER  
 COMPOUND: SOLID RUBBER  
 SIZES: 8, 11, 14



**797K GRIVOLA**  
 SAMPLE CODE: Q757  
 DESCRIPTION: CUPSOLE  
 COMPOUND: SOLID RUBBER  
 SIZES: 36.5, 38, 39, 40, 41, 42, 43, 44, 45,  
 46, 47.5, 48.5, 49.5, 52



**848M/W PILLOW**  
 SAMPLE CODE: Q971  
 DESCRIPTION: NET FIT  
 COMPOUND: SOLID RUBBER + EVA MIDSOLE + TPU  
 SIZES: WOMEN'S: 3, 4, 5, 6, 7, 8  
 MEN'S: 9, 10, 11, 12, 13



**856K NUASI MIDSOLE II**  
 SAMPLE CODE: Q916  
 DESCRIPTION: NET FIT  
 COMPOUND: SOLID RUBBER + POLYETHER MIDSOLE  
 SIZES: UK: 3, 4, 5, 6, 7, 8, 9, 10, 11, 12, 13, 14



**826K ROOTS**  
 SAMPLE CODE: Q842  
 DESCRIPTION: NET FIT  
 COMPOUND: SOLID RUBBER + EVA MIDSOLE + SHANK  
 SIZES: UK: 4, 5, 6, 7, 8, 9, 10, 11, 12



**830K TUBAVA**  
 SAMPLE CODE: Q845  
 DESCRIPTION: NET FIT  
 COMPOUND: SOLID RUBBER + EVA MIDSOLE + TPU  
 SIZES: UK: 3, 4, 5, 6, 7, 8, 9, 10, 11, 12, 13, 14



**869K SKYRUNNING**  
 SAMPLE CODE: Q897  
 DESCRIPTION: NET FIT  
 COMPOUND: SOLID RUBBER + EVA MIDSOLE + ESS  
 SIZES: UK: 4, 5, 6, 7, 8, 9, 10, 11, 12, 13, 14  
 NOTE: TPU AND/OR CARBON FIBER AVAILABLE



**873K NEO DAY HIKER**  
 SAMPLE CODE: Q903  
 DESCRIPTION: NET FIT  
 COMPOUND: SOLID RUBBER + EVA MIDSOLE  
 SIZES: US: 3.5, 5, 6, 7, 8, 10, 11, 12, 13, 14



**846K TN-333**  
 SAMPLE CODE: Q896  
 DESCRIPTION: NET FIT  
 COMPOUND: SOLID RUBBER + EVA MIDSOLE + TPU  
 SIZES: 4.75, 5.75, 6.75, 7.75, 8.75, 9.75,  
 10.75, 11.75, 12.75, 13.75



**847K TN-444**  
 SAMPLE CODE: Q912  
 DESCRIPTION: NET FIT  
 COMPOUND: SOLID RUBBER + EVA MIDSOLE + TPU  
 SIZES: 3.75, 4.75, 5.75, 6.75, 7.75, 8.75, 9.75,  
 10.75, 11.75, 12.75



**878K ARONNE**  
 SAMPLE CODE: Q935  
 DESCRIPTION: NET FIT  
 COMPOUND: SOLID RUBBER + EVA MIDSOLE  
 SIZES: UK: 4, 5, 6, 7, 8, 9, 10, 11, 12, 13



**885K NEW BOULDER**  
 SAMPLE CODE: S107  
 DESCRIPTION: BLOCKER  
 COMPOUND: SOLID RUBBER  
 SIZES: 6, 9.5, 13, 16





### 992K URBAN BIKE

SAMPLE CODE: S190  
DESCRIPTION: NET FIT  
COMPOUND: SOLID RUBBER  
SIZES: 36.5, 38.5, 40.5, 42.5, 44.5, 46.5



### 993K TOURING BIKE

SAMPLE CODE: S192  
DESCRIPTION: NET FIT  
COMPOUND: SOLID RUBBER  
SIZE: 35.5, 37.5, 39.5, 41.5, 43.5, 45.5



### 009C FAST TRAIL

SAMPLE CODE: S084  
DESCRIPTION: NET FIT  
COMPOUND: SOLID RUBBER + EVA MIDSOLE  
SIZES: OUTSOLE: 38, 41, 44, 47, 50  
MIDSOLE: 36, 37, 38, 39, 40, 41, 42, 43, 44, 45, 46, 47, 48



### 012C MATON

SAMPLE CODE: S052  
DESCRIPTION: BLOCKER  
COMPOUND: SOLID RUBBER  
SIZES: 4.25, 5.25, 6.25, 7.25, 8.25, 9.25, 10.25, 11.25, 12.25, 13.25



### 001F MULTIFUNCTION MCT

PRODUCTION CODE: 001F  
DESCRIPTION: BLOCKER  
COMPOUND: SOLID RUBBER + MCT FABRIC  
SIZES: UK: 3, 4, 5, 6, 7, 8, 9, 10, 11, 12, 13



### 002F BOULDER MCT

SAMPLE CODE: S447  
DESCRIPTION: BLOCKER  
COMPOUND: SOLID RUBBER + MCT FABRIC  
SIZES: 7.5, 9.5, 10.5, 12, 14



### 016C ICEBERG 2

SAMPLE CODE: Q405  
DESCRIPTION: BLOCKER + HEEL  
COMPOUND: SOLID RUBBER  
SIZES: O/S: 35, 38, 39, 42, 43, 46  
HEEL: 35, 38, 42, 48



### 020C MOTOR BIKE

SAMPLE CODE: S211  
DESCRIPTION: NET FIT  
COMPOUND: SOLID RUBBER  
SIZES: 36.5, 38, 39, 40, 41, 42, 43, 44, 45, 46



### 004F HUNTING MCT

SAMPLE CODE: S446  
DESCRIPTION: CUPSOLE  
COMPOUND: SOLID RUBBER + MCT FABRIC  
SIZES: 36, 37, 38, 39, 40, 41, 42, 43, 44



### 006F BOULDER MCT

PRODUCTION CODE: 006F  
DESCRIPTION: BLOCKER  
COMPOUND: SOLID RUBBER + MCT FABRIC  
SIZES: 6.5, 9.5, 13.5



### 030C LINX

SAMPLE CODE: S187  
DESCRIPTION: BLOCKER  
COMPOUND: SOLID RUBBER  
SIZES: 36, 37, 38, 39, 40, 41, 42, 43, 44, 45, 46, 47, 48



### 043C NORTH SHARP CLAW

SAMPLE CODE: S188  
DESCRIPTION: NET FIT  
COMPOUND: SOLID RUBBER + EVA MIDSOLE + NYLON CLEAT  
SIZES: 36, 37, 38, 39, 40, 41, 42, 43, 44, 45, 46, 47, 48





**055C DAHLIA**

SAMPLE CODE: S016  
DESCRIPTION: NET FIT  
COMPOUND: SOLID RUBBER + EVA MIDSOLE  
SIZES: 4, 5, 6, 7, 8, 9 10



**064B/C ARCTIC THUNDER**

SAMPLE CODE: S083  
DESCRIPTION: NET FIT  
COMPOUND: SOLID RUBBER + EVA MIDSOLE  
SIZES: 5, 6, 7, 8, 9, 10, 11, 12



**148C FOURA EVO**

SAMPLE CODE: S287  
DESCRIPTION: NET FIT  
COMPOUND: SOLID RUBBER + EVA MIDSOLE  
SIZES: 3, 4, 5, 6, 7, 8, 9, 10, 11, 12, 13, 14  
NOTE: MOQ 1,000 PAIRS



**171C MARMOLADA**

SAMPLE CODE: S554  
DESCRIPTION: BLOCKER  
COMPOUND: SOLID RUBBER  
SIZES: 6.5, 7.5, 8, 9, 9.5, 11, 11.5, 13, 13.5, 15, 17  
NOTE: FOREPART THICKNESS: 10MM / HEEL THICKNESS: 17MM



**075C GRIONDA**

SAMPLE CODE: S191  
DESCRIPTION: CUPSOLE  
COMPOUND: SOLID RUBBER  
SIZES: 36.5, 38, 39, 40, 41, 42, 43, 44, 45, 46, 47, 48



**076C IBEX**

SAMPLE CODE: S298  
DESCRIPTION: BLOCKER  
COMPOUND: SOLID RUBBER  
SIZES: 4, 5, 6, 7, 8, 9, 10, 11, 12, 13, 14



**175C SKYRUNNING ADVANCED**

SAMPLE CODE: S536  
DESCRIPTION: NET FIT  
COMPOUND: SOLID RUBBER + EVA MIDSOLE  
SIZES: UK: 4, 5, 6, 7, 8, 9, 10, 11, 12, 13, 14



**186C SPHIKE RGS**

SAMPLE CODE: Z034  
DESCRIPTION: NET FIT  
COMPOUND: SOLID RUBBER + EVA MIDSOLE  
SIZES: 35.5, 37, 38, 39, 40, 41, 42, 43, 44, 45, 46, 47



**108C WINKLER EVO**

SAMPLE CODE: S281  
DESCRIPTION: NET FIT  
COMPOUND: SOLID RUBBER + IP EVA MIDSOLE  
SIZES: UK: 3, 4, 5, 6, 7, 8, 9, 10, 11, 12, 13



**127C TWIRLKID**

SAMPLE CODE: S282  
DESCRIPTION: CUPSOLE  
COMPOUND: SOLID RUBBER  
SIZES: 25, 26, 27, 28, 29, 30, 31, 32, 33, 34, 35, 36, 37, 38, 39, 40



**189C ACARAHO**

SAMPLE CODE: S514  
DESCRIPTION: CUPSOLE  
COMPOUND: SOLID RUBBER  
SIZES: 1, 2, 3, 4, 5, 6, 7, 8, 9, 10, 11, 12, 13



**213C RGS HIKER**

SAMPLE CODE: S674  
DESCRIPTION: NET FIT  
COMPOUND: SOLID RUBBER + POLYETHER MIDSOLE + NYLON SHANK  
SIZES: 37, 38, 39, 40, 41, 42, 43, 44, 45, 46, 47 FRENCH GRADING



NEW



**215C TAKU MIDSOLE**  
SAMPLE CODE: S653  
DESCRIPTION: NET FIT MIDSOLE  
COMPOUND: EVA MIDSOLE  
SIZE: 3.5, 5, 6, 7, 8, 9, 10, 11, 12, 13, 14



**242C EAST RIDGE**  
SAMPLE CODE: S492  
DESCRIPTION: BLOCKER  
COMPOUND: SOLID RUBBER  
SIZES: 7, 8, 9, 10, 11, 12



**298C PREDATOR II**  
SAMPLE CODE: S  
DESCRIPTION: BLOCKER  
COMPOUND: SOLID RUBBER  
SIZES: 4, 5, 6, 7, 8, 9, 10, 11.5, 13



**305C OYSTER**  
PRODUCTION CODE: 305C  
DESCRIPTION: NET FIT  
COMPOUND: SOLID RUBBER + EVA MIDSOLE + TPU  
SIZES: 6, 7, 8, 9, 10, 11, 11.5, 12, 13



**244C HUNTING**  
SAMPLE CODE: S446  
DESCRIPTION: CUPSOLE  
COMPOUND: SOLID RUBBER  
SIZES: 36, 37, 38, 39, 40, 41, 42, 43, 44 FRENCH GRADING



**262C SNEAKER GOLF**  
SAMPLE CODE: S593  
DESCRIPTION: NET FIT  
COMPOUND: SOLID RUBBER  
SIZES: UK: 1.5, 2.5, 4, 5, 6, 7, 8, 9, 10, 11, 12, 13

NEW



**406C THIN KLETTERLIFT**  
SAMPLE CODE: S823  
DESCRIPTION: BLOCKER  
COMPOUND: SOLID RUBBER  
SIZE: 36, 37, 38, 39, 40, 41, 42, 43, 44, 45



**433C SHURIKEN**  
SAMPLE CODE: S920  
DESCRIPTION: NET FIT MIDSOLE  
COMPOUND: IP EVA  
SIZES: 4, 5, 6, 7, 8, 9, 10, 11, 12  
NOTE: USES 148C FOURA EVO RUBBER OUTSOLE | MOQ 1,000 PAIRS



**272C EXMOOR**  
SAMPLE CODE: S525  
DESCRIPTION: NET FIT  
COMPOUND: SOLID RUBBER + EVA MIDSOLE  
SIZES: UK: 4.5, 5.5, 6.5, 7.5, 8.5, 9.5, 10.5, 11.5, 12.5, 13.5



**281C MULTIFILM**  
SAMPLE CODE: S683 (RB)/S1186(EVA)  
DESCRIPTION: NET FIT  
COMPOUND: SOLID RUBBER + EVA MIDSOLE  
SIZES: UK: 3.5, 4.5, 5.5, 6.5, 7.5, 8.5, 9.5, 10.5, 11.5, 12.5



**440C URBAN TREK**  
SAMPLE CODE: S509  
DESCRIPTION: BLOCKER  
COMPOUND: SOLID RUBBER  
SIZES: 41, 44, 48.5



**441C DJ CRACK**  
SAMPLE CODE: S680  
DESCRIPTION: NET FIT  
COMPOUND: SOLID RUBBER  
SIZES: 4.25, 5.25, 6.25, 7.25, 8.25, 9.25, 10.25, 11.25, 12.5





### 456C MULTITENDOS

SAMPLE CODE: S391  
 DESCRIPTION: NET FIT  
 COMPOUND: SOLID RUBBER + EVA MIDSOLE  
 + NYLON SHANK  
 SIZES: 5.5, 7, 8, 9, 10, 11, 12.5



### 485C ATV

SAMPLE CODE: S992  
 DESCRIPTION: CUPSOLE  
 COMPOUND: SOLID RUBBER + POLYETHER MIDSOLE  
 SIZES: 39, 40, 41, 42, 43, 44, 45, 46, 47



### 619C AFTERSKY

SAMPLE CODE: S1021  
 DESCRIPTION: NETFIT  
 COMPOUND: SOLID RUBBER + EVA MIDSOLE  
 SIZE: 36.5, 38, 39, 40, 41, 42, 43, 44, 45, 46, 47.5



### 629C VYBRID HIKE

SAMPLE CODE: VN002  
 DESCRIPTION: NET FIT  
 COMPOUND: SOLID RUBBER + EVA MIDSOLE + TPU  
 SIZE: 36, 37, 38, 39, 40, 41, 42, 43, 44, 45



### 514C FUGA

SAMPLE CODE: S927  
 DESCRIPTION: NET FIT  
 COMPOUND: SOLID RUBBER + EVA MIDSOLE + TPU HEEL CUP  
 SIZE: 35, 36.5, 38, 39, 40, 41, 42, 43, 44, 45, 46, 47



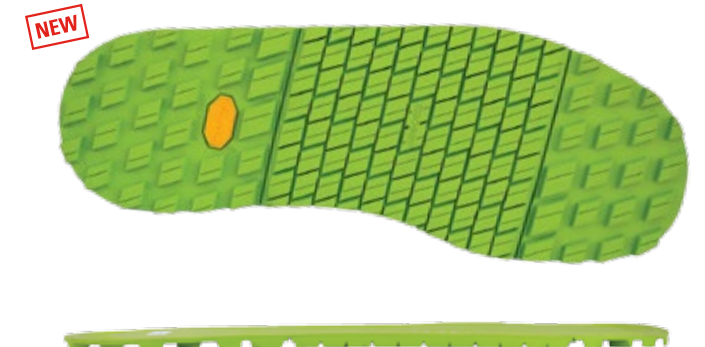
### 534C FORT WILLIAM

SAMPLE CODE: S926X/Y  
 DESCRIPTION: NET FIT  
 COMPOUND: SOLID RUBBER + EVA MIDSOLE + NYLON CLEAT  
 SIZE: 37, 38, 39, 40, 41, 42, 43, 44, 45, 46, 47.5  
 NOTE: S926Y HAS RUBBER PLUG REPLACES CLEAT



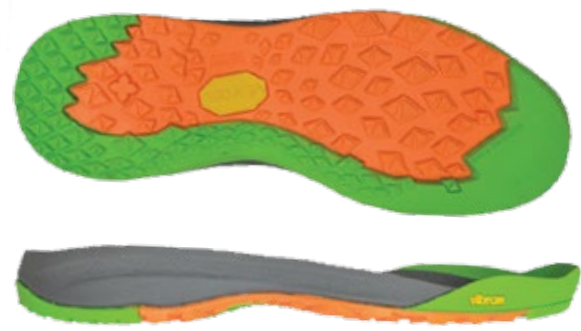
### 646C MUSTANG

SAMPLE CODE: S929  
 DESCRIPTION: CUPSOLE  
 COMPOUND: SOLID RUBBER  
 SIZE: 39, 40, 41, 42, 43, 44, 45, 46



### S1324 MAERENGUE

DESCRIPTION: BLOCKER  
 COMPOUND: SOLID RUBBER  
 SIZE: UK: 6, 8, 10, 12



### 541CN/CE PASSWORD

SAMPLE CODE: S928  
 DESCRIPTION: NET FIT  
 COMPOUND: SOLID RUBBER + EVA MIDSOLE + ESS  
 SIZE: 36.5, 38, 39, 40, 41, 42, 43, 44, 45, 46, 47.5  
 NOTE: 541CN: RB + EVA + NYLON SHANK; 541CE: RB + EVA + ESS



### 593C CAMPOS

SAMPLE CODE: S1012  
 DESCRIPTION: NET FIT  
 COMPOUND: SOLID RUBBER + EVA MIDSOLE  
 SIZE: UK: 4, 5, 6, 7, 8, 9, 10, 11, 12



### S918 BRANDY

PRODUCTION CODE: S792C  
 DESCRIPTION: NET FIT  
 COMPOUND: SOLID RUBBER  
 SIZE: 38, 39, 40, 41, 42, 43, 44  
 NOTE: THIS SOLE USES THE S084/009C FAST TRAIL EVA MIDSOLE





# *WORK/INDUSTRIAL*





### 210K MONTANA

PRODUCTION CODE: 210K/210P

DESCRIPTION: BLOCKER

COMPOUND: SOLID RUBBER

SIZES: K US: 7, 8, 9, 10, 11, 12, 13, 14, 15, 16, 17

P US: 5, 6, 7, 8, 9, 10, 11, 12, 13, 14, 15



### 241K CASCADE

SAMPLE CODE: Q089

DESCRIPTION: BLOCKER

COMPOUND: SOLID RUBBER

SIZES: US: 7, 8, 9, 10, 11, 12, 13, 14, 15, 16



### 275K (1289) BIG HORN

SAMPLE CODE: Q011

DESCRIPTION: BLOCKER

COMPOUND: SOLID RUBBER

SIZES: US: 7, 8, 9, 10, 11, 12, 13, 14



### 280K LITTLE HORN

SAMPLE CODE: Q017

DESCRIPTION: BLOCKER

COMPOUND: SOLID RUBBER

SIZES: US: 7, 8, 9, 10, 11, 12, 13, 14, 15



### 245K HUNTING

SAMPLE CODE: Q069

DESCRIPTION: CUPSOLE

COMPOUND: SOLID RUBBER

SIZES: US: 3, 4, 5, 6, 7, 8, 9, 10, 11, 12, 13, 14



### 261K/P/Z LOGGER

SAMPLE CODE: Q112

DESCRIPTION: BLOCKER

COMPOUND: SOLID RUBBER

SIZES: US: 4, 5, 6, 7, 8, 9, 10, 11, 12, 13, 14,

15, 16, 17

NOTE: 261K/P: 12MM FOREFOOT/44MM HEEL

NOTE: 261Z: 16MM FOREPART/44MM HEEL



### 507K F&S

SAMPLE CODE: Q359

DESCRIPTION: CUPSOLE

COMPOUND: SOLID RUBBER

SIZES: US: 5.5, 6, 7, 8, 8.5, 9, 9.5, 10, 10.5, 11, 11.5,

12, 13, 14



### 524K NEW ALPHA+

PRODUCTION CODE: 524K

DESCRIPTION: BLOCKER

COMPOUND: SOLID RUBBER

SIZES: US: 5, 6, 7, 8, 9, 10, 11, 12, 13, 16



### 262K NEW BIFIDA

SAMPLE CODE: Q116

DESCRIPTION: CUPSOLE

COMPOUND: SOLID RUBBER

SIZES: US: 4, 4.5, 5, 5.5, 6, 6.5, 7, 7.5, 8, 8.5, 9, 9.5,

10, 10.5, 11, 12, 13, 14, 15, 16



### 270K (1375) BIFIDA

SAMPLE CODE: Q010

DESCRIPTION: CUPSOLE

COMPOUND: SOLID RUBBER

SIZES: 36, 37, 38, 39, 40, 41, 42, 43, 44, 45, 46,

47, 48.5, 49.5



### SO498

PRODUCTION CODE: 582K

DESCRIPTION: BLOCKER

COMPOUND: SOLID RUBBER

SIZES: US: 8, 9, 10, 11, 12, 13, 14, 15, 16



### 620K (1318) ALPHA WEDGE

PRODUCTION CODE: Q505

DESCRIPTION: BLOCKER

COMPOUND: SOLID RUBBER

SIZES: US: 8, 10, 12, 14, 16





### 633K STREET WARRIOR

SAMPLE CODE: Q518  
DESCRIPTION: BLOCKER  
COMPOUND: SOLID RUBBER  
SIZES: 7, 8, 9, 10, 11, 12, 13, 14, 16



### 642K LIGHTWEIGHT WORK

SAMPLE CODE: Q573  
DESCRIPTION: BLOCKER  
COMPOUND: SOLID RUBBER  
SIZES: 5, 6, 7, 8, 9, 10, 11, 12, 13, 14, 15



### 825K SAFE RUN

SAMPLE CODE: Q793  
DESCRIPTION: NET FIT  
COMPOUND: SOLID RUBBER + EVA MIDSOLE + TPU  
SIZES: 36.5, 38, 39, 40, 41, 42, 43, 44, 45, 46, 47.5



### 827K MALTESE BLOCKER

SAMPLE CODE: Q863  
DESCRIPTION: BLOCKER  
COMPOUND: SOLID RUBBER  
SIZES: 7, 8, 9, 10, 11, 12, 13, 14, 15



### 693K PHOENIX

SAMPLE CODE: Q636  
DESCRIPTION: BLOCKER  
COMPOUND: SOLID RUBBER  
SIZES: US: 8, 9, 10, 11, 12, 13, 14



### 767K SAFETY

SAMPLE CODE: Q765  
DESCRIPTION: NET FIT  
COMPOUND: SOLID RUBBER + EVA MIDSOLE  
SIZES: 37.5, 39, 40, 41, 42, 43, 44, 45, 46, 47.5, 49



### 834K TWISTER

SAMPLE CODE: Q934  
DESCRIPTION: BLOCKER  
COMPOUND: SOLID RUBBER  
SIZES: US: 39, 40, 41, 42, 43, 44, 45, 46,  
47, 48 FRENCH GRADING



### 849K STALWART

SAMPLE CODE: Q970  
DESCRIPTION: BLOCKER  
COMPOUND: SOLID RUBBER  
SIZES: US: 5, 6, 7, 8, 9, 10, 11, 12, 13, 14



### 781K STREET WARRIOR LOGGER

SAMPLE CODE: Q749  
DESCRIPTION: BLOCKER  
COMPOUND: SOLID RUBBER  
SIZES: 6.5, 7.5, 8.5, 9.5, 10.5, 11.5, 12, 13, 14



### 798K OFFSET MATAYUR

SAMPLE CODE: Q815  
DESCRIPTION: BLOCKER  
COMPOUND: SOLID RUBBER  
SIZES: US: 3, 4, 5, 6, 7, 8, 9, 10, 11, 12, 13, 14, 15



### 944K (1275) OLYMPIA

PRODUCTION CODE: 944K  
DESCRIPTION: BLOCKER  
COMPOUND: SOLID RUBBER  
SIZES: US: 4, 6, 7, 8, 9, 10, 11, 12, 13, 14, 15, 17



### 945K (1275W) OLYMPIA WIDE

PRODUCTION CODE: 945K  
DESCRIPTION: BLOCKER  
COMPOUND: SOLID RUBBER  
SIZES: US: 7, 8, 9, 10, 11, 12, 13, 14





**946K (1286) TACOMA LOGGER**

PRODUCTION CODE: 946K  
DESCRIPTION: BLOCKER  
COMPOUND: SOLID RUBBER  
SIZES: US: 7, 8, 9, 10, 11, 12, 13, 14



**951K MALTESE LUG FLAT SOLE**

PRODUCTION CODE: S001  
DESCRIPTION: BLOCKER  
COMPOUND: SOLID RUBBER  
SIZES: US: 3, 4, 5, 6, 7, 8, 9, 10, 11, 12, 13, 14, 15



**212C WINTER IRON TIRE**

SAMPLE CODE: S445  
DESCRIPTION: CUPSOLE  
COMPOUND: SOLID RUBBER  
SIZES: 36, 37.5, 38, 39, 40, 41, 42, 43, 44, 45, 46, 47, 48, 48.5



**297C FLAT IRON**

SAMPLE CODE: S744  
DESCRIPTION: BLOCKER  
COMPOUND: SOLID RUBBER  
SIZES: 8-9, 9.5-10.5, 11-12, 13-15



**952K (109) LOGGER**

PRODUCTION CODE: 952K  
DESCRIPTION: BLOCKER  
COMPOUND: SOLID RUBBER  
SIZES: US: 6, 7, 8, 9, 10, 11, 12, 13, 14



**979K MALTESE TL**

SAMPLE CODE: S134  
DESCRIPTION: BLOCKER  
COMPOUND: SOLID RUBBER  
SIZES: US: 6, 7, 8, 9, 10, 11, 12, 13, 14



**309C CANADIAN MUKLUK**

SAMPLE CODE: S761  
DESCRIPTION: BLOCKER  
COMPOUND: SOLID RUBBER  
SIZES: 9, 10, 11, 12, 13, 14



**327C SATURN**

SAMPLE CODE: R396  
DESCRIPTION: BLOCKER  
COMPOUND: SOLID RUBBER  
SIZES: 8, 9, 10, 11, 12, 13, 14, 15



**042C FASHION WORK**

SAMPLE CODE: S216  
DESCRIPTION: NET FIT MIDSOLE  
COMPOUND: POLYETHER  
SIZES: 36.5, 38, 39, 40, 41, 42, 43, 44, 45, 46, 47.5  
NOTE: THIS MIDSOLE CAN BE USED WITH A VARIETY OF FLAT, THIN, BLOCKER OUTSOLES: E.G. Q926, S107, Q536 ETC.



**187C NEW RUBBER ONE**

SAMPLE CODE: S567  
DESCRIPTION: NET FIT  
COMPOUND: SOLID RUBBER + EVA MIDSOLE  
SIZES: 36.5, 38, 39, 40, 41, 42, 43, 44, 45, 46, 47.5



**368C ZIG ZAG WORK**

SAMPLE CODE: S723  
DESCRIPTION: NET FIT  
COMPOUND: SOLID RUBBER + EVA MIDSOLE + NYLON SHANK  
OUTSOLE SIZES: 6.25, 7.25, 8.25, 9.25, 10.25, 11.25, 12.25, 13.25  
MIDSOLE SIZES: 6.5, 7.5, 8.5, 9.5, 10, 10.5, 11, 11.5, 12.5, 13.5



**550C FIREFOX**

SAMPLE CODE: S1118  
DESCRIPTION: CUPSOLE  
COMPOUND: SOLID RUBBER  
SIZES: UK: 36, 37, 38, 39, 40, 41, 42, 43, 44, 45, 46, 47, 48





### 570C SINGAPORE ARMY

SAMPLE CODE: S097

DESCRIPTION: CUPSOLE

COMPOUND: SOLID RUBBER + DIE CUT EVA

SIZE: US: 4, 4.75, 5.75, 6.75, 7.75, 8.75, 9.75,  
10.75, 11.75, 13, 14, 15



### S705 LADY WORK

DESCRIPTION: NET FIT

COMPOUND: SOLID RUBBER + EVA MIDSOLE

SIZE: US: 37, 38, 39, 40, 41, 42



# CASUAL





### 264B/C/K JAPANICE

SAMPLE CODE: Q123  
DESCRIPTION: BLOCKER + HEEL  
COMPOUND: SOLID RUBBER  
SIZES: BLOCKER + HEEL: 264B: 12, 15  
BLOCKER + HEEL: 264C: 35/38  
BLOCKER + HEEL: 264K: 39/42, 43/47



### 264W/267W JAPANICE

SAMPLE CODE: Q123  
DESCRIPTION: BLOCKER + HEEL  
COMPOUND: SOLID RUBBER  
SIZES: WOMEN'S: 35, 37, 38, 40  
NOTE: FOR BLACK VIBRAM® LOGO, USE 267W



### 040C FITTER

SAMPLE CODE: S219  
DESCRIPTION: BLOCKER  
COMPOUND: EXPANDED RUBBER - MORFLEX  
SIZES: US: 6, 8, 11, 12, 15, 18  
FOREPART THICKNESS: 10MM  
HEEL THICKNESS: 21MM



### 278K SNEAKER

SAMPLE CODE: Q130  
DESCRIPTION: NET FIT  
COMPOUND: SOLID RUBBER + EVA MIDSOLE  
SIZES: MEN'S: 36, 37, 39, 40, 41, 42, 43, 44, 45, 47, 48  
WOMEN'S: 37



### 269K TRACKER

SAMPLE CODE: Q144  
DESCRIPTION: BLOCKER  
COMPOUND: EXPANDED RUBBER - MORFLEX  
SIZES: US: 7, 8, 9, 10, 11, 12, 13, 14, 15, 16



### 271K FITTER

SAMPLE CODE: Q145  
DESCRIPTION: BLOCKER  
COMPOUND: EXPANDED RUBBER - MORFLEX  
SIZES: US: 4, 5, 6, 7, 8, 9, 10, 11, 12, 15, 18  
FOREPART THICKNESS: 15MM  
HEEL THICKNESS: 34MM



### 284K NANTES

PRODUCTION CODE: 284K  
DESCRIPTION: BLOCKER  
COMPOUND: SOLID RUBBER  
SIZES: US: 7-8.5, 9-10.5, 11-12.5, 13-14  
NOTE: RAZOR-CUT SIPING AVAILABLE



### 377B CHRISTY

PRODUCTION CODE: 377B  
DESCRIPTION: BLOCKER  
COMPOUND: EXPANDED RUBBER - NEWFLEX  
SIZES: US: 8, 10, 12, 14  
FOREPART THICKNESS: 12MM  
HEEL THICKNESS: 29MM



### 271P FITTER

SAMPLE CODE: Q145  
DESCRIPTION: BLOCKER  
COMPOUND: EXPANDED RUBBER - MORFLEX  
SIZES: US: 4, 5, 6, 7, 8, 9, 10, 11, 12, 15, 18  
FOREPART THICKNESS: 15MM  
HEEL THICKNESS: 28MM



### 271Z FITTER

SAMPLE CODE: Q145  
DESCRIPTION: BLOCKER  
COMPOUND: EXPANDED RUBBER - MORFLEX  
SIZES: US: 4, 5, 6, 7, 8, 9, 10, 11, 12, 15, 18  
FOREPART THICKNESS: 15MM  
HEEL THICKNESS: 15MM



### 377K (4377) CHRISTY

PRODUCTION CODE: 377K  
DESCRIPTION: BLOCKER  
COMPOUND: EXPANDED RUBBER - NEWFLEX  
SIZES: US: 8, 10, 12, 14  
FOREPART THICKNESS: 12MM  
HEEL THICKNESS: 26MM



### 950B CHRISTY

PRODUCTION CODE: 950B  
DESCRIPTION: BLOCKER  
COMPOUND: EXPANDED RUBBER - NEWFLEX  
SIZES: US: 8, 10, 12, 14  
FOREPART THICKNESS: 8MM  
HEEL THICKNESS: 14MM





**950K (4014) CHRISTY**

PRODUCTION CODE: 950K  
DESCRIPTION: BLOCKER  
COMPOUND: EXPANDED RUBBER - NEWFLEX  
SIZES: US: 8, 10, 12, 14  
FOREPART THICKNESS: 10.5MM  
HEEL THICKNESS: 23MM



**417K (1328) ELVIS**

SAMPLE CODE: Q121  
DESCRIPTION: BLOCKER  
COMPOUND: SOLID RUBBER  
SIZES: 6, 9, 13



**450K ADELE**

SAMPLE CODE: Q264  
DESCRIPTION: NET FIT  
COMPOUND: SOLID RUBBER + EVA MIDSOLE  
SIZES: US: 35.5, 37.5, 38.5, 39.5, 40.5, 41.5, 42.5, 43.5, 44.5, 45.5



**470K SIDNEY**

SAMPLE CODE: Q271  
DESCRIPTION: BLOCKER  
COMPOUND: SOLID RUBBER  
SIZES: US: 5/7, 8/9, 11/12



**429K OKINAWA**

SAMPLE CODE: Q117  
DESCRIPTION: BLOCKER  
COMPOUND: EXPANDED RUBBER - MORFLEX  
SIZES: 8, 11



**431K SKYLINE**

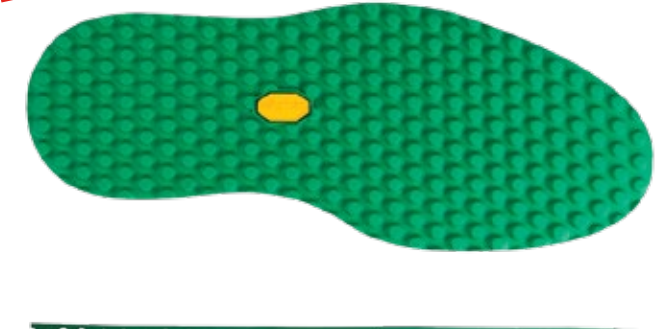
SAMPLE CODE: Q247  
DESCRIPTION: BLOCKER  
COMPOUND: EXPANDED RUBBER - MORFLEX



**477K FREERIDE**

SAMPLE CODE: AAS6  
DESCRIPTION: BLOCKER  
COMPOUND: SOLID RUBBER  
SIZES: US: 10.5, 15

NEW



**477B FREERIDE (WIDER)**

SAMPLE CODE: AAS6  
DESCRIPTION: BLOCKER  
COMPOUND: SOLID RUBBER  
SIZE: 9, 12, 15



**442K DOVE**

SAMPLE CODE: Q210  
DESCRIPTION: NET FIT  
COMPOUND: SOLID RUBBER + EVA MIDSOLE  
SIZES: UK: 4, 5, 6, 7, 8, 9, 10, 11



**446K OVERLAND**

SAMPLE CODE: Q191  
DESCRIPTION: BLOCKER  
COMPOUND: SOLID RUBBER  
SIZES: US: 3, 5, 7, 9, 11, 13, 15



**472K OREGON**

SAMPLE CODE: Q231  
DESCRIPTION: BLOCKER  
COMPOUND: EXPANDED RUBBER - NEWFLEX  
SIZES: UK: 7, 9, 11



**516K LONG HAUL**

PRODUCTION CODE: Q276  
DESCRIPTION: BLOCKER + HEEL  
COMPOUND: BLOCKER: EXPANDED RUBBER - NEWFLEX  
HEEL: SOLID RUBBER  
SIZES: US: 4, 6, 8, 9, 10, 11, 12, 13, 14  
NOTE: PLEASE SEE APPENDIX FOR ENTIRE RANGE OF Q276 HEEL PROFILES





### 526K FAILLON CASUAL

SAMPLE CODE: Q167  
DESCRIPTION: BLOCKER  
COMPOUND: SOLID RUBBER  
SIZES: US: 6-7, 7.5-8.5, 9-10, 10.5-11.5, 12-13



### 528K (1136) ROCCIA NEWFLEX

SAMPLE CODE: Q330  
DESCRIPTION: BLOCKER  
COMPOUND: EXPANDED RUBBER - NEWFLEX  
SIZES: 3/4, 5/6, 7/8, 8.5/10, 10.5/12, 12.5/14, 15.5/17



### 550K ADELE HEEL 80

SAMPLE CODE: Q836  
DESCRIPTION: NET FIT  
COMPOUND: SOLID RUBBER + EVA MIDSOLE  
SIZES: 35.5, 37.5, 39.5



### 583K SPLASH

SAMPLE CODE: Q426  
DESCRIPTION: BLOCKER  
COMPOUND: SOLID RUBBER  
SIZES: 35, 36, 37, 38, 39, 40



### 530K (2040) FIGHTER SOLE

PRODUCTION CODE: 530K  
DESCRIPTION: BLOCKER + HEEL  
COMPOUND: SOLID RUBBER  
SIZE: 48  
HEEL SIZES: 38, 43, 48  
NOTE: ADDITIONAL SIZES AVAILABLE IN ITALIAN CATALOG



### SO934

PRODUCTION CODE: 537K  
DESCRIPTION: BLOCKER  
COMPOUND: EXPANDED RUBBER - NEWFLEX  
SIZES: US: 6, 7, 8, 9, 10, 11, 12, 13, 14



### 586K LINK

SAMPLE CODE: Q433  
DESCRIPTION: BLOCKER  
COMPOUND: SOLID RUBBER  
SIZES: US: 3, 6, 9, 12, 15, 16.5



### 608M HORIZON

SAMPLE CODE: Q490  
DESCRIPTION: NET FIT  
COMPOUND: SOLID RUBBER + EVA MIDSOLE  
SIZES: MEN'S: 41, 42, 43, 44, 45, 46  
WOMEN'S: 36, 37, 38, 39, 40



### SO935

PRODUCTION CODE: 538K  
DESCRIPTION: BLOCKER  
COMPOUND: EXPANDED RUBBER - NEWFLEX  
SIZES: US: 6, 7, 8, 9, 10, 11, 12, 13, 14



### SO553

PRODUCTION CODE: 539K  
DESCRIPTION: BLOCKER  
COMPOUND: EXPANDED RUBBER - NEWFLEX  
SIZES: US: 6, 7, 8, 9, 10, 11, 12, 13, 14



### 609K CRACK

SAMPLE CODE: Q499  
DESCRIPTION: BLOCKER + HEEL  
COMPOUND: SOLID RUBBER  
SIZES: 39/42, 43/49



### 629K DIVISION

SAMPLE CODE: Q500  
DESCRIPTION: BLOCKER  
COMPOUND: EXPANDED RUBBER - MOREFLEX  
SIZES: 35, 38, 39, 43, 46





**639K LADDER**

SAMPLE CODE: Q501  
DESCRIPTION: NET FIT  
COMPOUND: EXPANDED RUBBER - NEWFLEX  
SIZES: UK: 5, 6, 7, 8, 9, 10, 11, 12  
NOTE: MOQ 1,000 PAIRS



**663K DENIM**

SAMPLE CODE: Q613  
DESCRIPTION: NET FIT  
COMPOUND: EXPANDED RUBBER - NEWFLEX  
SIZES: UK: 5, 6, 7, 8, 9, 10, 11, 12



**708K AKELE**

SAMPLE CODE: Q579  
DESCRIPTION: CUPSOLE  
COMPOUND: SOLID RUBBER  
SIZES: UK: 8, 9, 10, 11, 12, 13



**711K BJORN**

SAMPLE CODE: Q435  
DESCRIPTION: CUPSOLE  
COMPOUND: SOLID RUBBER  
SIZES: US: 7.25, 8.25, 9.25, 10.25, 11.25, 12.25, 13.25



**666K BLOCKER**

SAMPLE CODE: Q582  
DESCRIPTION: BLOCKER  
COMPOUND: SOLID RUBBER  
SIZES: 7, 9, 13, 16



**669K SKULL**

SAMPLE CODE: Q598  
DESCRIPTION: BLOCKER  
COMPOUND: SOLID RUBBER  
SIZES: UK: 9, 13



**730M/W COVA 25**

SAMPLE CODE: Q730  
DESCRIPTION: NET FIT  
COMPOUND: SOLID RUBBER  
SIZES: WOMEN'S: 6, 8  
MEN'S: 8, 10, 12, 14



**747K ADVENTURE TRAVEL**

SAMPLE CODE: Q691  
DESCRIPTION: NET FIT  
COMPOUND: SOLID RUBBER  
SIZES: UK: 3, 4, 5, 6, 7, 8, 9, 10, 11, 12, 13



**688K 3D MOC**

SAMPLE CODE: Q633  
DESCRIPTION: NET FIT  
COMPOUND: SOLID RUBBER  
SIZES: UK: 6, 7, 8, 9, 10, 11, 12



**698K GU-SHION**

SAMPLE CODE: Q624  
DESCRIPTION: NET FIT  
COMPOUND: SOLID RUBBER  
SIZES: UK: 5, 6, 7, 8, 9, 10, 11, 12



**758K CHOPPER**

SAMPLE CODE: Q773  
DESCRIPTION: NET FIT  
COMPOUND: SOLID RUBBER  
SIZES: 39, 40, 41, 42, 43, 44, 45, 46



**(1743) BOLOGNA**

PRODUCTION CODE: 810K  
DESCRIPTION: BLOCKER  
COMPOUND: EXPANDED RUBBER - GUMLITE  
SIZES: 41/42, 43/44, 47  
FOREFOOT/HEEL: 7.5MM/24MM





### 831K NEO MULTISPORT

SAMPLE CODE: Q907  
DESCRIPTION: NET FIT  
COMPOUND: SOLID RUBBER + EVA RUBBER  
SIZES: US: 4.25, 5.25, 6.25, 7.25, 8.25, 9.25, 10.25, 11.25, 12, 13, 14, 15



### 845K OPTITANK

SAMPLE CODE: Q833  
DESCRIPTION: BLOCKER  
COMPOUND: SOLID RUBBER  
SIZES: 39, 41, 43, 45



### 948K (1758) STALKER

PRODUCTION CODE: 948K  
DESCRIPTION: BLOCKER  
COMPOUND: EXPANDED RUBBER - GUMLITE  
SIZES: US: 7, 9, 11, 13, 15



### 949K (2060) SPORT

PRODUCTION CODE: 949K  
DESCRIPTION: BLOCKER  
COMPOUND: EXPANDED RUBBER - MOREFLEX  
SIZES: US: 8, 10, 12



### 864K ETON CHINA

PRODUCTION CODE: 864K  
DESCRIPTION: BLOCKER + HEEL  
COMPOUND: SOLID RUBBER  
SIZES: 6, 8, 10, 12, 14



### 871K PORTOFINO

SAMPLE CODE: Q963  
DESCRIPTION: BLOCKER  
COMPOUND: SOLID RUBBER  
SIZES: 7.5, 9.5, 11.5, 14  
NOTE: RAZOR-CUT SIPING AVAILABLE



### 969K FLAKE 2

SAMPLE CODE: S198  
DESCRIPTION: CUPSOLE  
COMPOUND: SOLID RUBBER  
SIZES: WOMEN'S: 36.5, 38, 39, 40, 41.5



### 973K OCTAGONE 2.0

SAMPLE CODE: S201  
DESCRIPTION: BLOCKER  
COMPOUND: SOLID RUBBER  
SIZE: US: 9, 14



### 887K COMFORT

SAMPLE CODE: S031  
DESCRIPTION: NET FIT  
COMPOUND: NEWFLEX 3D  
SIZES: 35, 36, 37, 38, 39, 40, 41  
NOTE: MOQ 1,000 PAIRS



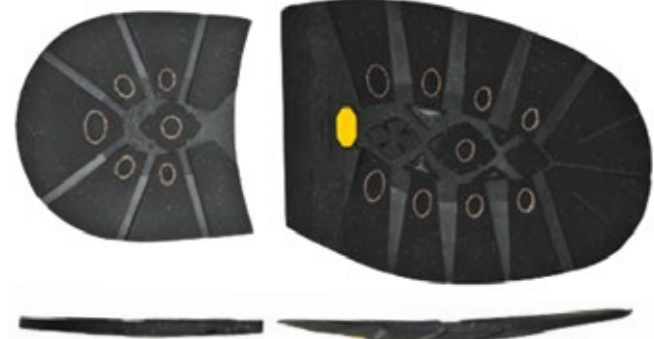
### 947K (1730) ASPEN

PRODUCTION CODE: 947K  
DESCRIPTION: BLOCKER  
COMPOUND: EXPANDED RUBBER - GUMLITE  
SIZES: US: 6, 8, 10, 12, 14



### 984K (2070) SCOOTER

PRODUCTION CODE: 984K  
DESCRIPTION: BLOCKER  
COMPOUND: EXPANDED RUBBER - MORFLEX  
SIZES: US: 7, 8, 9, 10, 11, 12, 13, 14



### 009F HALF MCT

PRODUCTION CODE: 009F  
DESCRIPTION: TOPLIFE + HEEL  
COMPOUND: SOLID RUBBER + MCT  
SIZES: MEN'S: 10, 14





### 049C LASSO

SAMPLE CODE: S276  
DESCRIPTION: NET FIT  
COMPOUND: SOLID RUBBER + POLYETHER MIDSOLE  
SIZES: MEN'S: 39, 40, 41, 43, 44



### 056C WINTER CITY

SAMPLE CODE: S325  
DESCRIPTION: CUPSOLE  
COMPOUND: SOLID RUBBER  
SIZES: 35, 36.5, 38, 39, 40, 41, 42, 43, 44, 45, 46, 47.5



### 089C CREBOOT

SAMPLE CODE: S100  
DESCRIPTION: NET FIT  
COMPOUND: SOLID RUBBER  
SIZES: 37, 38, 39, 40, 41, 42, 43, 44, 45, 46



### 111C BEEHIVE

SAMPLE CODE: S310  
DESCRIPTION: BLOCKER  
COMPOUND: EXPANDED RUBBER - NEWFLEX  
SIZE: MEN'S: 7



### 057C (1007) CUSHION

PRODUCTION CODE: 057C  
DESCRIPTION: BLOCKER  
COMPOUND: EXPANDED RUBBER - NEWFLEX  
SIZES: US: 7-8.5, 9-10.5, 11-12, 13-15



### 063C (232) MINI LUG

PRODUCTION CODE: 063C  
DESCRIPTION: BLOCKER  
COMPOUND: SOLID RUBBER  
SIZES: US: 5, 6, 7, 8, 9, 10, 11, 12, 13, 14, 15, 16



### 115C DRESS-RUN

SAMPLE CODE: S296  
DESCRIPTION: NET FIT  
COMPOUND: SOLID RUBBER + EVA MIDSOLE  
SIZES: 35, 36, 37, 38, 39, 40, 41, 42, 43, 44, 45



### 130C THIN CHRISTY

SAMPLE CODE: S315  
DESCRIPTION: BLOCKER  
COMPOUND: SOLID RUBBER  
SIZES: US MEN'S: 4, 7, 10, 11



### 066C STEP

SAMPLE CODE: S099  
DESCRIPTION: BLOCKER + NET FIT MIDSOLE  
COMPOUND: SOLID RUBBER + IP EVA MIDSOLE  
SIZES: 35.5A, 37A, 38A, 39A, 40A, 41A, 42B, 43A, 44A, 45A, 46.5A

NOTE: 066C MIDSOLE CAN BE LAMINATED WITH ANY THIN BLOCKER OUTSOLE;  
E.G. S107, Q833, S315, ETC. | MOQ 1,000 PAIRS



### 084C PREMIUM RUGGED

SAMPLE CODE: S330  
DESCRIPTION: BLOCKER  
COMPOUND: SOLID RUBBER  
SIZES: US: 7-7.5, 8-8.5, 9-9.5, 10-10.5, 11-11.5, 12-12.5, 13-13.5, 14-14.5, 15-15.5



### 131C CHESTER

SAMPLE CODE: Q921  
DESCRIPTION: RUBBER O/S + RUBBER HEEL  
COMPOUND: SOLID RUBBER  
SIZES: 8, 16



### 151B/C LIGHT TANK

SAMPLE CODE: S222  
DESCRIPTION: BLOCKER  
COMPOUND: SOLID RUBBER + EVA MIDSOLE  
SIZES: 42, 44





### 155C FITNESS

SAMPLE CODE: S389  
DESCRIPTION: NEW FIT  
COMPOUND: SOLID RUBBER + EVA MIDSOLE  
SIZES: UK: 3, 4, 5, 6, 7, 8, 9, 10  
NOTE: MOQ 1,000 PAIRS



### 172C RAMBLE

SAMPLE CODE: S478  
DESCRIPTION: BLOCKER  
COMPOUND: IP EVA  
SIZES: 25, 26.5  
NOTE: MOQ 1,000 PAIRS



### 330C CREPE

SAMPLE CODE: S700  
DESCRIPTION: BLOCKER  
COMPOUND: EXPANDED RUBBER - VI-LITE  
SIZES: 35.5-38, 42-44  
NOTE: MOQ 1,000 PAIRS



### 342C MINI RIPPLE

SAMPLE CODE: S720  
DESCRIPTION: BLOCKER  
COMPOUND: SOLID RUBBER  
SIZES: US: 7.5, 9, 10.5, 12.5



### 173C PATCHY

SAMPLE CODE: S479  
DESCRIPTION: BLOCKER  
COMPOUND: IP EVA  
SIZES: 25, 26.5  
NOTE: MOQ 1,000 PAIRS

NEW



### 747C PERLA

SAMPLE CODE: S1405  
DESCRIPTION: CUPSOLE  
COMPOUND: SOLID RUBBER  
SIZE: 35.5, 37, 38, 39, 40, 41



### 343C STARMAP

SAMPLE CODE: S335  
DESCRIPTION: CUPSOLE  
COMPOUND: SOLID RUBBER  
SIZES: 36.5, 38, 39, 40, 41, 42, 43, 44, 45.5, 47, 49



### 382C FASHION SNEAKER

SAMPLE CODE: S027  
DESCRIPTION: NET FIT  
COMPOUND: SOLID RUBBER  
SIZES: 40, 42



### 251C RIVERSTONES

SAMPLE CODE: S564  
DESCRIPTION: BLOCKER  
COMPOUND: IP EVA - VI-LITE  
SIZES: 37,39  
NOTE: MOQ 1,000 PAIRS



### 316C CARIBE

SAMPLE CODE: S230  
DESCRIPTION: BLOCKER  
COMPOUND: SOLID RUBBER + DIE CUT EVA  
SIZES: 37/41, 42/46

NEW



### 349C VOLTAGGIO

SAMPLE CODE: S799  
DESCRIPTION: BLOCKER  
COMPOUND: SOLID RUBBER  
SIZE: 39, 40, 41, 42, 43, 44, 45, 46, 47



### 434C VAGABOND

SAMPLE CODE: S978  
DESCRIPTION: NET FIT MIDSOLE  
COMPOUND: IP EVA  
SIZES: 36, 38, 39, 40, 41, 42, 43, 44, 45.5, 46.5, 48  
NOTE: MIDSOLE ONLY; CAN BE LAMINATED WITH ANY THIN BLOCKER;  
E.G. S107, Q833, S315, ETC. | MOQ 1,000 PAIRS





### 482C CHRISTY CUPSOLE

SAMPLE CODE: S247  
DESCRIPTION: RUBBER O/S  
COMPOUND: SOLID RUBBER  
SIZE: US: 7, 8, 9, 10, 11, 12, 13



### 503C TRADITION

SAMPLE CODE: S963  
DESCRIPTION: BLOCKER  
COMPOUND: EXPANDED RUBBER - NEWFLEX  
SIZE: 25  
FOREPART: 9MM  
HEEL: 28MM



### 542C MULTISTOMP

SAMPLE CODE: VN007  
DESCRIPTION: BLOCKER  
COMPOUND: EXPANDED RUBBER - GUMLITE  
SIZE: 37, 40, 43, 46  
NOTE: DUAL DENSITY AVAILABLE



### 546C SCATTER

SAMPLE CODE: S932  
DESCRIPTION: NETFIT  
COMPOUND: EXPANDED EVA - VI-LITE  
SIZE: CHINA: 38, 39, 40, 41, 42, 43, 44  
NOTE: MOQ 1,000 PAIRS



### 507C CHICAGO

SAMPLE CODE: S943  
DESCRIPTION: NET FIT  
COMPOUND: SOLID RUBBER + EVA MIDSOLE + TPU  
SIZE: 35.5, 36, 37, 38, 39, 40, 41, 42, 43, 44, 45, 46, 47.5



### 515C EVEREST

SAMPLE CODE: 515C  
DESCRIPTION: BLOCKER  
COMPOUND: SOLID RUBBER  
SIZE: 5.5, 7, 7.5, 8, 8.5, 9, 9.5, 10, 10.5, 11, 11.5, 12, 13



### 705C MARBRANI

SAMPLE CODE: S1101  
DESCRIPTION: CUPSOLE  
COMPOUND: SOLID RUBBER  
SIZE: 4, 5, 6, 7, 8, 9, 10, 11, 12, 13



### CHRISTY ARCTIC GRIP

SAMPLE CODE: S1319  
DESCRIPTION: BLOCKER  
COMPOUND: SOLID RUBBER  
SIZE: 4, 5, 6, 7, 8, 9, 10, 11, 12, 13



### 530C SHEARLING

SAMPLE CODE: S1108  
DESCRIPTION: BLOCKER + HEEL  
COMPOUND: SOLID RUBBER  
SIZE: O/S: 5, 6, 7, 8, 9, 10, 11 (-WOMEN'S)  
HEEL: 5(5-6.5), 7(7-8.5), 9(9-11)



### 539C CAMP MOC

SAMPLE CODE: S895  
DESCRIPTION: NET FIT  
COMPOUND: SOLID RUBBER  
SIZE: US: 6, 7, 8, 9, 10, 11, 12, 13



### 006AG GOTHAM CITY ARCTIC GRIP

SAMPLE CODE: S1219  
DESCRIPTION: BLOCKER  
COMPOUND: SOLID RUBBER  
SIZE: UK 7-7.5, 8-8.5, 9-9.5, 10-10.5, 11-11.5, 12-12.5, 13



### 199C NEW GOLD SOLE

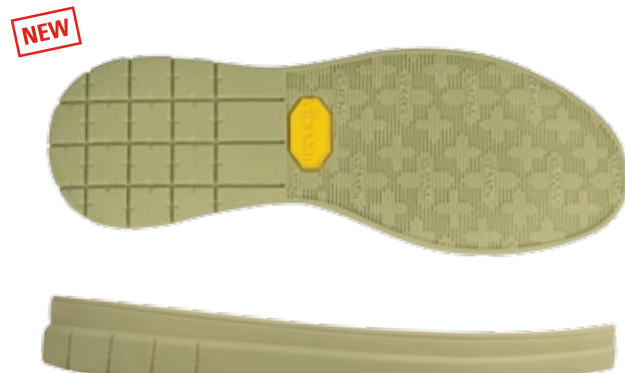
SAMPLE CODE: S388  
DESCRIPTION: CUPSOLE  
COMPOUND: SOLID RUBBER  
SIZES: 36.5, 38.5, 40.5, 42.5, 44.5





### S1100 CHRISTY CUT

PRODUCTION CODE: S738C  
DESCRIPTION: BLOCKER  
COMPOUND: NEWFLEX  
SIZE: 8, 10, 12, 14



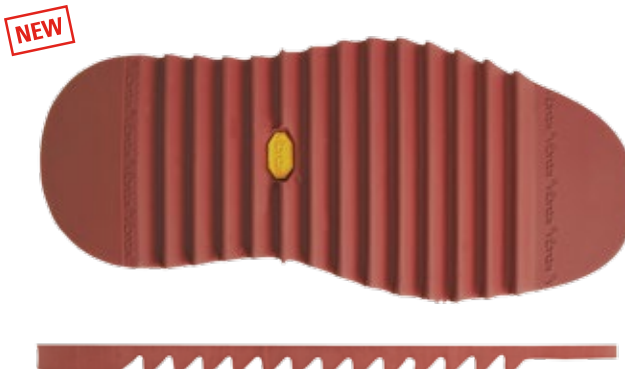
### S1459 OPTILITE

PRODUCTION CODE: 803C  
DESCRIPTION: CUPSOLE  
COMPOUND: EVA  
SIZE: 36, 37, 38, 39, 40, 41, 42, 43, 44, 45, 46, 47.5



### S1461 PLUMP

PRODUCTION CODE: 777C  
DESCRIPTION: NET FIT  
COMPOUND: EVA  
SIZE: 35.5, 37, 38, 39, 40, 41, 42, 43, 44, 45, 46, 47.5



### S1559 RIPPLE

DESCRIPTION: BLOCKER  
COMPOUND: NEWFLEX  
SIZE: 38, 40, 42, 44, 46



### Z197 SANDAL SLIDE

DESCRIPTION: BLOCKER  
COMPOUND: IU PLUS  
SIZE: 36, 38, 40, 42, 44, 46, 48



### 007AG YELLOW ARCTIC GRIP

SAMPLE CODE: S1244  
DESCRIPTION: BLOCKER  
COMPOUND: SOLID RUBBER  
SIZE: 40, 42, 44, 46, 48, 50



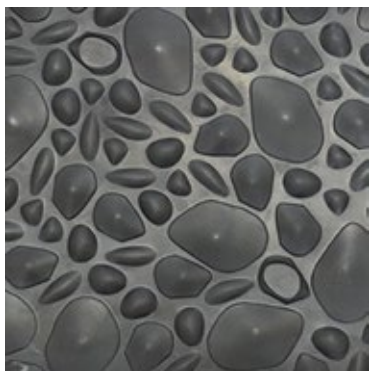
# FUTURE SOLES COMING SOON





# SOLING SHEETS





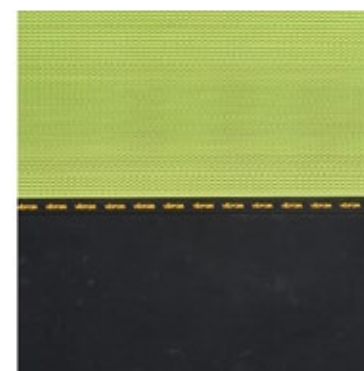
**123K NEW FLOOR TILE**

PRODUCTION CODE: 123K  
COMPOUND: SOLID RUBBER  
DIMENSIONS: 318MM x 228MM x 6.0MM



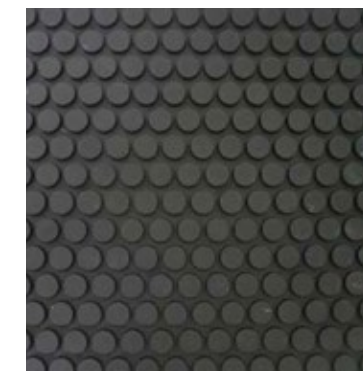
**640K GRADON**

SAMPLE CODE: Q401  
COMPOUND: SOLID RUBBER  
DIMENSIONS: 390MM x 400MM x 6.0 MM



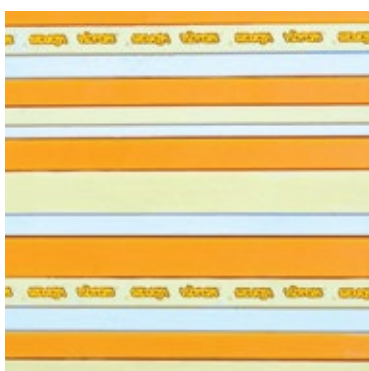
**995K FISH**

SAMPLE CODE: S114  
COMPOUND: SOLID RUBBER  
SIZE: 370MM x 400MM x 4.5MM



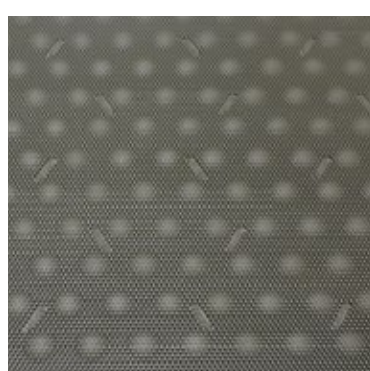
**094C BICOMPOUND**

SAMPLE CODE: S062  
COMPOUND: SOLID RUBBER  
SIZE: 350MM x 240MM x 7.0MM



**686K STRIPS**

SAMPLE CODE: Q537  
COMPOUND: SOLID RUBBER  
DIMENSIONS: 245MM x 358MM x 4.5MM



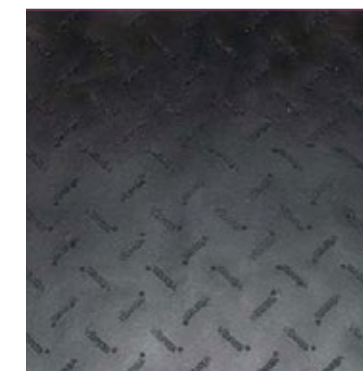
**844K PLURIBALL**

SAMPLE CODE: Q927  
COMPOUND: SOLID RUBBER  
DIMENSIONS: 350MM x 350MM x 5.3MM



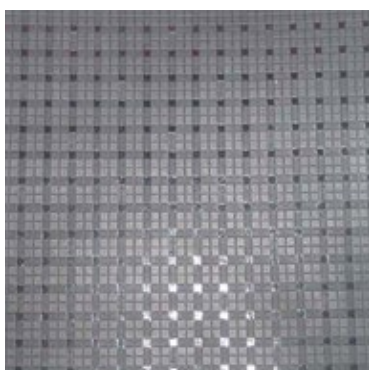
**095C EINSTEIN**

SAMPLE CODE: S077  
COMPOUND: SOLID RUBBER  
SIZE: 245MM x 358MM x 5.0MM



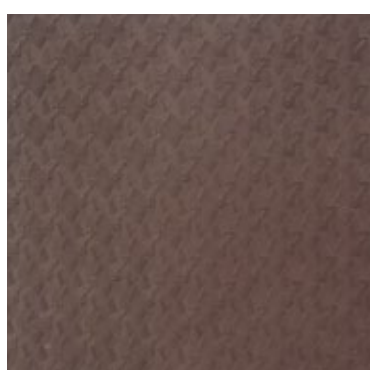
**099C AAS8A LOGO SHEET 0.8**

SAMPLE CODE: Q585  
COMPOUND: SOLID RUBBER  
DIMENSIONS: 400MM x 200MM x 0.8MM



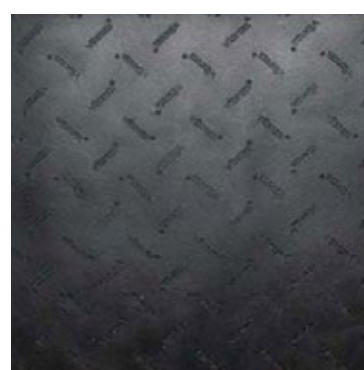
**990K BAGPIPES**

SAMPLE CODE: Q858  
COMPOUND: SOLID RUBBER  
DIMENSIONS: 302MM x 215MM x 1.8MM



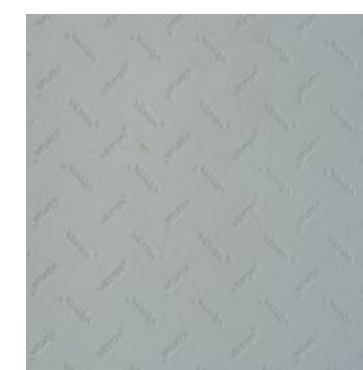
**991K FEATHER SHEET**

SAMPLE CODE: Q120  
COMPOUND: MORFLEX / SOLID RUBBER  
DIMENSIONS: MORFLEX: 320MM x 380MM x 6.4MM  
SOLID: 320MM x 360MM x 6.4MM



**100C AAS8B LOGO SHEET 1.0**

SAMPLE CODE: Q945  
COMPOUND: SOLID RUBBER  
DIMENSIONS: 400MM x 200MM x 1.0MM



**137C LOGO SHEET 2.5**

SAMPLE CODE: AAS8D  
COMPOUND: SOLID RUBBER  
DIMENSIONS: 400MM x 200MM x 2.5MM





### 054C AAS8 LOGO SHEET 4.0

SAMPLE CODE: Q968  
COMPOUND: SOLID RUBBER  
DIMENSIONS: 400MM x 200MM x 4.0MM



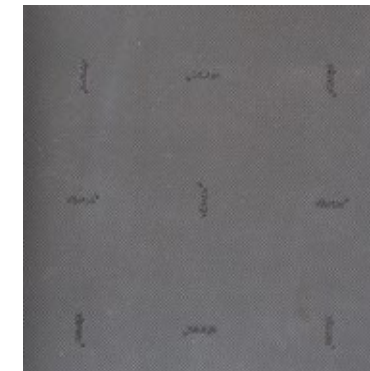
### 107C PLANTATION CREPE

PRODUCTION CODE: 107C  
COMPOUND: SOLID RUBBER  
DIMENSIONS: 360MM x 450MM x 6.4MM



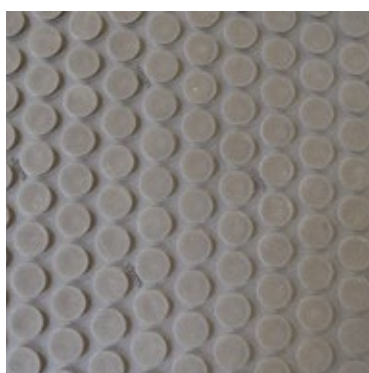
### 285C MARILYN

SAMPLE CODE: Q794  
COMPOUND: SOLID RUBBER  
DIMENSIONS: 245MM x 358MM x 5.0MM



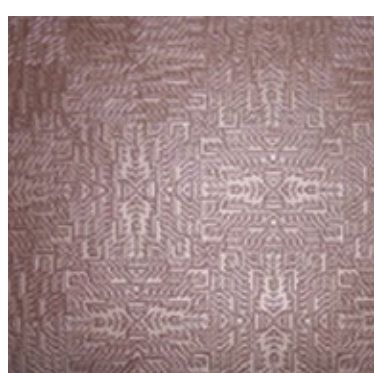
### 331C SHIELD

SAMPLE CODE: S732  
COMPOUND: SOLID RUBBER + FABRIC BACKING  
DIMENSIONS: 480MM x 1000MM x 2.0MM



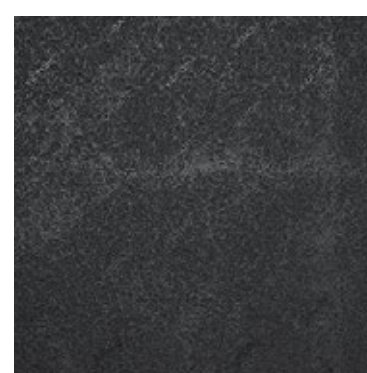
### 214C R&D1

SAMPLE CODE: Q812  
COMPOUND: SOLID RUBBER  
DIMENSIONS: 240MM x 350MM x 4MM



### 239C ARROW

SAMPLE CODE: Q346  
COMPOUND: EXPANDED RUBBER - MORFLEX  
DIMENSIONS: 270MM x 360MM x 6MM



### 369C ROUGH

SAMPLE CODE: S880  
COMPOUND: EXPANDED RUBBER - NEWFLEX  
DIMENSIONS: 400MM x 500MM x 7.5MM



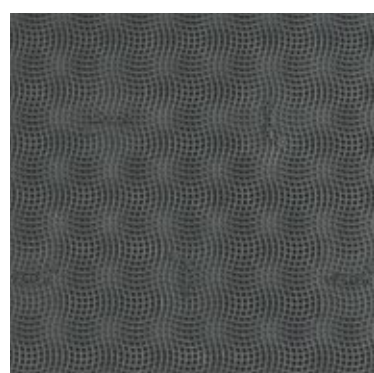
### 401C OPTISTAR

SAMPLE CODE: S957  
COMPOUND: SOLID RUBBER  
DIMENSIONS: 360MM x 320MM x 6.0MM



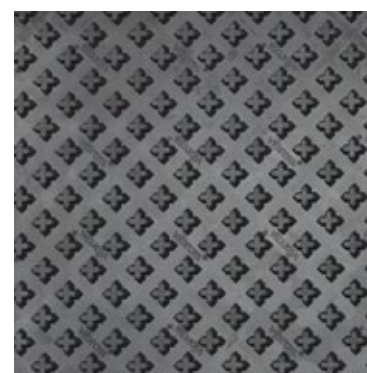
### 279C CHINESE KNOT

SAMPLE CODE: S563  
COMPOUND: EXPANDED RUBBER - NEWFLEX  
DIMENSIONS: 380MM x 320MM x 4.0MM



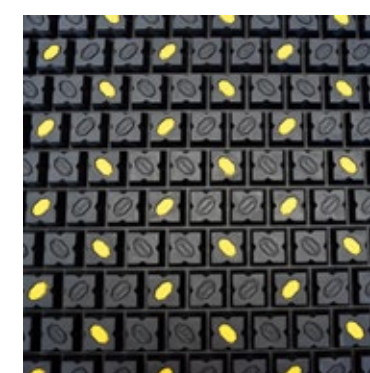
### 282C/P CHERRY

SAMPLE CODE: S778  
COMPOUND: SOLID RUBBER  
DIMENSIONS: 282C: 350MM x 350MM X 3.0MM  
282P: 350MM x 350MM x 5MM



### 419C BRANDY

SAMPLE CODE: S976  
COMPOUND: SOLID RUBBER  
DIMENSIONS: 360MM x 320MM x 2.5MM



### 420C STOMP

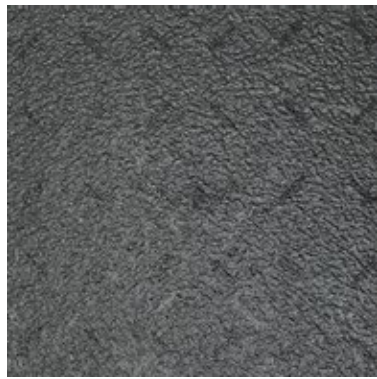
SAMPLE CODE: S977  
COMPOUND: SOLID RUBBER  
DIMENSIONS: 360MM x 320MM x 13.0MM





### 450C XS EDGE

SAMPLE CODE: Z117  
COMPOUND: SOLID RUBBER - XS GRIP  
DIMENSIONS: 1,000MM x 1,000MM x 4.0MM



### 524H/L PLANTATION CREPE MORFLEX

SAMPLE CODE: S1148  
COMPOUND: EXPANDED RUBBER - MORFLEX  
DIMENSIONS: H: 360MM x 400MM x 10.0MM  
L: 360MM x 400MM x 6.0MM



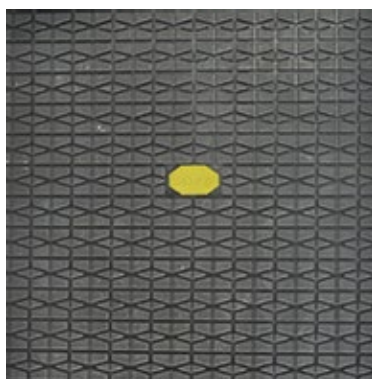
### 554C CHERRY BOM

SAMPLE CODE: Q443  
COMPOUND: SOLID RUBBER  
DIMENSIONS: 140MM x 340MM x 4MM



### 562C GRIPTION TEX

SAMPLE CODE: Q593  
COMPOUND: PU + FABRIC  
DIMENSIONS: 400MM x 200MM x 2.0MM



### Z114 SRC SOLE DESIGN

SAMPLE CODE: S684  
COMPOUND: SOLID RUBBER  
DIMENSIONS: 400MM x 200MM x 6.0MM

NEW



### 696C GIGICAMO

SAMPLE CODE: S1402  
COMPOUND: SOLID RUBBER  
DIMENSIONS: 400MM x 260MM

# FUTURE SHEETS COMING SOON





# SAMPLES





**Q043 GUMLITE**  
DESCRIPTION: BLOCKER  
COMPOUND: EXPANDED RUBBER - GUMLITE  
SIZE: 40



**Q334 CHIZO**  
DESCRIPTION: BLOCKER  
COMPOUND: SOLID RUBBER  
SIZE: 35/37



**Q427 BOMERANG**  
DESCRIPTION: BLOCKER  
COMPOUND: SOLID RUBBER  
SIZE: 42



**Q428 CRASH**  
DESCRIPTION: BLOCKER  
COMPOUND: SOLID RUBBER  
SIZE: 35/37



**Q342 ICEBERG**  
DESCRIPTION: BLOCKER  
COMPOUND: SOLID RUBBER  
SIZE: 38/42



**Q344 BONNIE**  
DESCRIPTION: NET FIT  
COMPOUND: SOLID RUBBER  
SIZE: 37



**Q448 SHELL BOOT**  
DESCRIPTION: NET FIT  
COMPOUND: SOLID RUBBER  
SIZES: US: 9, 9.5



**Q477 WATER KID**  
DESCRIPTION: NET FIT  
COMPOUND: SOLID RUBBER + EVA MIDSOLE  
SIZE: KID'S: 31



**Q397 EPOCH**  
DESCRIPTION: BLOCKER  
COMPOUND: SOLID RUBBER  
SIZE: 42



**Q423 JOG**  
DESCRIPTION: NET FIT  
COMPOUND: SOLID RUBBER + EVA MIDSOLE  
SIZE: 43.5



**Q526 LAGORAI**  
DESCRIPTION: NET FIT  
COMPOUND: SOLID RUBBER  
SIZE: 42



**Q621 90'S**  
DESCRIPTION: NET FIT  
COMPOUND: SOLID RUBBER + EVA MIDSOLE + SHANK  
SIZE: UK: 8





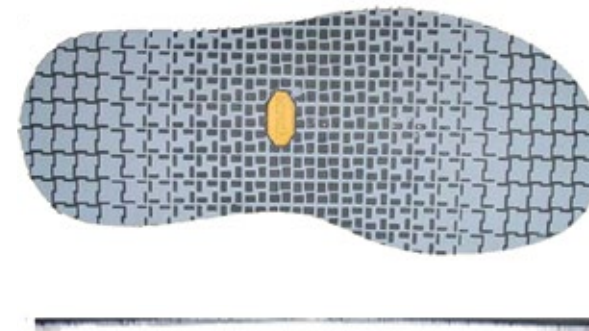
**Q632 3D TRAVEL**

DESCRIPTION: NET FIT  
COMPOUND: SOLID RUBBER  
SIZE: UK: 8



**Q635 TETRA**

DESCRIPTION: BLOCKER  
COMPOUND: SOLID RUBBER  
SIZE: 41/42



**Q756 ORIGAMI**

DESCRIPTION: BLOCKER  
COMPOUND: SOLID RUBBER  
SIZE: UK: 6



**Q758 SKATE BMX**

DESCRIPTION: NET FIT  
COMPOUND: SOLID RUBBER + EVA MIDSOLE  
SIZE: US: 11



**Q679 ECO-VENTURE**

DESCRIPTION: NET FIT  
COMPOUND: SOLID RUBBER + EVA MIDSOLE  
SIZE: UK: 8



**Q692 FISH**

DESCRIPTION: BLOCKER  
COMPOUND: SOLID RUBBER  
SIZE: 35/37



**Q763 HEEL SHOCK**

DESCRIPTION: NET FIT  
COMPOUND: SOLID RUBBER + TPU + PU  
SIZE: 37



**Q764 SNOWBALL**

DESCRIPTION: CUPSOLE  
COMPOUND: SOLID RUBBER + EVA INSERTS  
SIZE: 37



**Q707 70'S**

DESCRIPTION: BLOCKER  
COMPOUND: SOLID RUBBER  
SIZE: 35/37



**Q708 ECO-VENTURE WINTER**

DESCRIPTION: NET FIT  
COMPOUND: SOLID RUBBER + EVA MIDSOLE  
SIZE: UK: 8



**Q766 SNOWBOARD**

DESCRIPTION: NET FIT  
COMPOUND: SOLID RUBBER + GUMILITE MIDSOLE  
SIZE: UK: 9



**Q770 MOTO GP**

DESCRIPTION: NET FIT  
COMPOUND: SOLID RUBBER + DIE CUT EVA MIDSOLE + NYLON SHANK  
SIZE: 42





**Q772 FES**  
 DESCRIPTION: NET FIT  
 COMPOUND: SOLID RUBBER  
 SIZE: UK: 8



**Q777 POSEUR**  
 DESCRIPTION: NET FIT  
 COMPOUND: SOLID RUBBER + EVA MIDSOLE  
 + NYLON SHANK  
 SIZE: US: 9



**Q848 CORAL**  
 DESCRIPTION: CUPSOLE  
 COMPOUND: SOLID RUBBER  
 SIZE: WOMEN'S: 38



**Q849 STORM WALKER**  
 DESCRIPTION: NET FIT  
 COMPOUND: SOLID RUBBER + EVA MIDSOLE + TPU  
 SIZE: UK: 8



**Q784 SNOWHOLE**  
 DESCRIPTION: NET FIT  
 COMPOUND: SOLID RUBBER  
 SIZE: 37



**Q786 PITCH**  
 DESCRIPTION: NET FIT  
 COMPOUND: SOLID + EVA MIDSOLE  
 SIZE: 43



**Q866 MALTESE CROSS CUPSOLE**  
 DESCRIPTION: NET FIT  
 COMPOUND: SOLID RUBBER  
 SIZE: US: 9



**Q867 MALTESE CROSS COMBO**  
 DESCRIPTION: NET FIT  
 COMPOUND: SOLID RUBBER + EVA MIDSOLE  
 SIZE: US: 8



**Q843 SKIPPER**  
 DESCRIPTION: NET FIT  
 COMPOUND: SOLID RUBBER  
 SIZE: UK: 8.5  
 NOTE: FULL SERIES AVAILABLE FROM ITALY ARTICLE 2140



**Q846 SANDARIN**  
 DESCRIPTION: NET FIT  
 COMPOUND: SOLID RUBBER + EVA MIDSOLE / FOOTBED  
 SIZE: US: 9

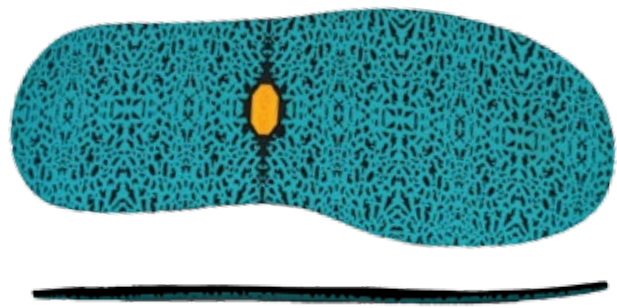


**Q886 NUASI**  
 DESCRIPTION: NET FIT  
 COMPOUND: SOLID RUBBER + EVA MIDSOLE  
 SIZE: UK: 8



**Q888 BALTIMORE**  
 DESCRIPTION: BLOCKER  
 COMPOUND: SOLID RUBBER + EVA MIDSOLE  
 SIZE: 9/10





**Q902 LEOPALOPE**  
 DESCRIPTION: BLOCKER  
 COMPOUND: SOLID RUBBER  
 SIZE: US: 9



**Q922 MILITARY**  
 DESCRIPTION: BLOCKER  
 COMPOUND: SOLID RUBBER + DIE CUT EVA  
 SIZE: 25



**Q982 VALS**  
 DESCRIPTION: CUPSOLE  
 COMPOUND: SOLID RUBBER  
 SIZE: UK: 8



**Q983 FOR WEDGE**  
 DESCRIPTION: NET FIT  
 COMPOUND: SOLID RUBBER + EVA + TPU  
 SIZE: 37



**Q940 BARLEY CLASSIC**  
 DESCRIPTION: NET FIT  
 COMPOUND: SOLID RUBBER + EVA MIDSOLE  
 SIZE: 42



**Q942 HIGH HEEL ROCK**  
 DESCRIPTION: NET FIT  
 COMPOUND: SOLID RUBBER + PU + TPU  
 SIZE: 37



**G121 LITE CUT MS**  
 DESCRIPTION: BLOCKER  
 COMPOUND: IP EVA - VI-LITE  
 SIZE: 42



**G126 GLOXINA CUT**  
 DESCRIPTION: BLOCKER  
 COMPOUND: IP EVA - VI-LITE  
 SIZE: 42  
 NOTE: FULL SIZE RANGE AVAILABLE FROM VIBRAM ITALY, #9105



**Q969 VIBE**  
 DESCRIPTION: NET FIT  
 COMPOUND: SOLID RUBBER + EVA + TPU  
 SIZE: 37



**Q981 VIBER**  
 DESCRIPTION: NET FIT  
 COMPOUND: SOLID RUBBER + EVA + TPU  
 SIZE: 37



**G151 CURCUMA**  
 DESCRIPTION: BLOCKER  
 COMPOUND: SOLID RUBBER  
 SIZE: 43



**S013 WEDGE TECH**  
 DESCRIPTION: NET FIT  
 COMPOUND: SOLID RUBBER + EVA + TPU  
 SIZE: 37





**S028 IRON TIRE**  
DESCRIPTION: CUPSOLE  
COMPOUND: SOLID RUBBER  
SIZE: UK: 8



**S068 RUBBERONE**  
DESCRIPTION: NET FIT  
COMPOUND: SOLID RUBBER + POLYESTER MIDSOLE  
SIZE: 42A



**S169 SEBASTIAN**  
DESCRIPTION: HALF SOLE + HEEL  
COMPOUND: SOLID RUBBER  
SIZE: 3



**S223 FASHION RUN**  
DESCRIPTION: NET FIT  
COMPOUND: SOLID RUBBER + EVA MIDSOLE  
SIZE: 42



**S082 WATER CANNON**  
DESCRIPTION: NET FIT  
COMPOUND: SOLID RUBBER + IP EVA MIDSOLE  
SIZE: UK: 9



**S090 MOTO GP2**  
DESCRIPTION: NET FIT  
COMPOUND: SOLID RUBBER + TPU + NYLON  
SIZE: 42



**S231 MONDRIAN**  
DESCRIPTION: BLOCKER  
COMPOUND: SOLID RUBBER  
SIZE: WOMEN'S: 37



**S232 TULLE**  
DESCRIPTION: BLOCKER  
COMPOUND: SOLID RUBBER  
SIZES: 6, 9



**S109 TRECCIA**  
DESCRIPTION: BLOCKER  
COMPOUND: SOLID RUBBER  
SIZE: UK: 8



**S131 FLAKE**  
DESCRIPTION: CUPSOLE  
COMPOUND: SOLID RUBBER  
SIZE: 38



**S270 KOJIKI**  
DESCRIPTION: NET FIT  
COMPOUND: SOLID RUBBER  
SIZE: 42



**S280 ANTELOPE**  
DESCRIPTION: CUPSOLE  
COMPOUND: SOLID RUBBER + EVA MIDSOLE  
SIZE: 8





**S288 HERCULES WORK**

DESCRIPTION: NET FIT  
COMPOUND: SOLID RUBBER + EVA MIDSOLE + PU + TPU  
SIZE: 42



**S289 CRUX**

DESCRIPTION: NET FIT  
COMPOUND: SOLID RUBBER POLYETHER MIDSOLE  
+ AIRBAG  
SIZE: 42



**S316 OROBIANCO**

DESCRIPTION: NET FIT  
COMPOUND: SOLID RUBBER  
SIZE: 42



**S317 BIG KAHUNA**

DESCRIPTION: NET FIT  
COMPOUND: SOLID RUBBER + EVA MIDSOLE + TPU  
SIZE: 11



**S294 MULTI EVO**

DESCRIPTION: NET FIT  
COMPOUND: SOLID RUBBER + POLYETHER MIDSOLE  
SIZE: 8



**S303 MONOFLAT**

DESCRIPTION: BLOCKER  
COMPOUND: SOLID RUBBER  
SIZE: US: 9



**S323 FIT4 TREK**

DESCRIPTION: NET FIT  
COMPOUND: SOLID RUBBER + EVA MIDSOLE  
SIZE: 42



**S334 MOONBOOT**

DESCRIPTION: NET FIT  
COMPOUND: SOLID RUBBER + DIE CUT EVA  
SIZE: US: 8



**S307 MELCUP**

DESCRIPTION: NET FIT  
COMPOUND: SOLID RUBBER  
SIZE: 41



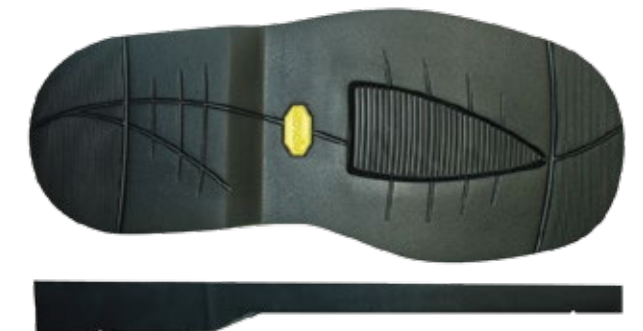
**S314 MONOMECH**

DESCRIPTION: CUPSOLE  
COMPOUND: SOLID RUBBER  
SIZE: 43



**S354 SHELL BOOT**

DESCRIPTION: NET FIT  
COMPOUND: SOLID RUBBER + EVA MIDSOLE + TPU  
SIZE: 42



**S359 BOAT GRIP**

DESCRIPTION: BLOCKER  
COMPOUND: EXPANDED RUBBER - NEWFLEX  
+ SOLID RUBBER INSERT  
SIZE: 9





**S370 WOMEN'S SHELL BOOT**  
 DESCRIPTION: NET FIT  
 COMPOUND: SOLID RUBBER + EVA MIDSOLE + TPU  
 SIZE: 38



**S379 SWIFT**  
 DESCRIPTION: NET FIT  
 COMPOUND: SOLID RUBBER + POLYETHER MIDSOLE  
 SIZE: 42



**S452 BLACKBIRD**  
 DESCRIPTION: BLOCKER  
 COMPOUND: SOLID RUBBER  
 SIZE: 9



**S465 JAPANESE MCT**  
 DESCRIPTION: BLOCKER  
 COMPOUND: SOLID RUBBER + MCT FABRIC  
 SIZE: WOMEN'S: 35/37



**S381 BIKIRUNN**  
 DESCRIPTION: NET FIT  
 COMPOUND: SOLID RUBBER + EVA MIDSOLE + TPU  
 SIZE: 42



**S382 APUA LEISURE**  
 DESCRIPTION: NET FIT  
 COMPOUND: SOLID RUBBER + EVA MIDSOLE  
 + MESH DRAINAGE HOLES  
 SIZE: 42



**S560 WEDGE**  
 DESCRIPTION: BLOCKER  
 COMPOUND: IP EVA - VI-LITE  
 SIZE: 37




**S561 W'S CUPSOLE**  
 DESCRIPTION: CUPSOLE  
 COMPOUND: IP EVA - VI-LITE  
 SIZE: 37



**S412 JAPANESE-TANK**  
 DESCRIPTION: BLOCKER  
 COMPOUND: SOLID RUBBER  
 SIZE: WOMEN'S: 35/37



**S448 ROCCIA 20:9**  **CARRARMATO**  
 DESCRIPTION: BLOCKER  
 COMPOUND: SOLID RUBBER  
 SIZE: US: 9



**S562 M'S BLOCKER**  
 DESCRIPTION: BLOCKER  
 COMPOUND: IP EVA - VI-LITE  
 SIZE: 42



**S569 CUTE**  
 DESCRIPTION: CUPSOLE  
 COMPOUND: SOLID RUBBER  
 SIZE: 31



NEW



**S708 CROSS**  
DESCRIPTION: BLOCKER  
COMPOUND: SOLID RUBBER  
SIZE: 43, 44, 45



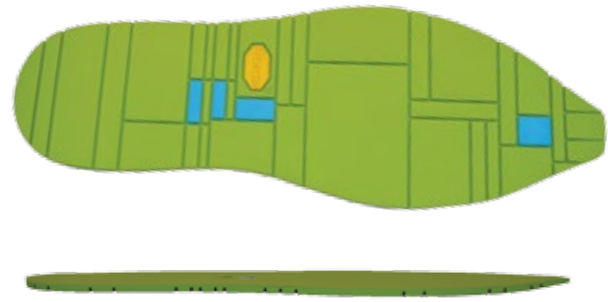
**S896 BUCKFORD**  
DESCRIPTION: BLOCKER  
COMPOUND: EXPANDED RUBBER - NEWFLEX  
SIZE: US: 10  
FOREPART: 8mm  
HEEL: 21mm



**S964 CRISTY VULC**  
DESCRIPTION: NET FIT  
COMPOUND: SOLID RUBBER  
SIZE: 9



**S1014 FALCON**  
DESCRIPTION: NETFIT  
COMPOUND: SOLID RUBBER  
SIZE: 42



**S897 BRERA SPORT**  
DESCRIPTION: BLOCKER  
COMPOUND: SOLID RUBBER  
SIZE: 43



**S930 MOVE**  
DESCRIPTION: NET FIT  
COMPOUND: SOLID RUBBER + CO-MOLDED EVA MIDSOLE  
SIZE: 38



**S1016 GIORGINA**  
DESCRIPTION: NET FIT  
COMPOUND: SOLID RUBBER + VI-MP MIDSOLE  
SIZE: 37



**S1017 MIKALA**  
DESCRIPTION: RUBBER O/S + VI-MF EVA M/S  
COMPOUND: VERSA  
SIZE: 42



**S944 FRIEDRICH**  
DESCRIPTION: BLOCKER  
COMPOUND: SOLID RUBBER  
SIZE: 44 (42/44)



**S945 EMMA**  
DESCRIPTION: BLOCKER  
COMPOUND: SOLID RUBBER  
SIZE: 38 (35.5/38)



**S1018 TINLEY**  
DESCRIPTION: RUBBER O/S + VI-MF EVA M/S  
COMPOUND: VERSA  
SIZE: 42



**S1078 BOAT**  
DESCRIPTION: RUBBER O/S + DIE-CUT EVA  
COMPOUND: ICETREK 2  
SIZE: 38, 43





**S1090 RETRO RUNNER**

DESCRIPTION: BLOCKER  
COMPOUND: SOLID RUBBER  
SIZE: 10



**S1111 WINTER CITY GUM**

DESCRIPTION: GUMLITE IP O/S  
COMPOUND: GUMLITE IP  
SIZE: 38

NEW



**S1323 MENEGO**

DESCRIPTION: NET FIT  
COMPOUND: EVA & RUBBER  
SIZE: 42

NEW



**S1389 LEICESTER**

DESCRIPTION: CUPSOLE  
COMPOUND: EVA & RUBBER  
SIZE: 42



**S1112 NEW BIFIDA GUM**

DESCRIPTION: GUMLITE IP O/S  
COMPOUND: GUMLITE IP  
SIZE: 9



**S1113 FORT WILLIAM GUM**

DESCRIPTION: GUMLITE IP O/S  
COMPOUND: GUMLITE IP  
SIZE: 42

NEW



**S1457 BRISTOL LAKE**

DESCRIPTION: CUPSOLE  
COMPOUND: SOLID RUBBER  
SIZE: 42

NEW



**R519 OUTDOOR ATHLETIC CARRARMATO**

DESCRIPTION: CUPSOLE  
COMPOUND: RUBBER BOTTOM & PU MIDSOLE  
SIZE: 42



**S1149 URBAN BIKE**

DESCRIPTION: NEW FIT  
COMPOUND: SOLID RUBBER + EVA MIDSOLE  
SIZE: 42



**S1247 NANTUCKET**

DESCRIPTION: NET FIT  
COMPOUND: SOLID RUBBER  
SIZE: US: 9  
NOTE: RAZOR-CUT SIPING AVAILABLE

NEW



**661C RIDING**

DESCRIPTION: NET FIT  
COMPOUND: EVA & SOLID RUBBER  
SIZE: 42

NEW



**S1460 LIGNO**

DESCRIPTION: NET FIT  
COMPOUND: EVA  
SIZE: 37 & 42



NEW



S1318 RETRO RUN  
ARCTIC GRIP  
DESCRIPTION: BLOCKER  
COMPOUND: SOLID RUBBER  
SIZE: 10



NEW



S1269 WINTER FASHION  
ARCTIC GRIP  
DESCRIPTION: BLOCKER & HEEL  
COMPOUND: SOLID RUBBER  
SIZE: 44



NEW



LB037 FLOW GENIUS  
DESCRIPTION: BLOCKER  
COMPOUND: LITEBASE TECH (MEGAGRIP)  
SIZE: 10

NEW



S1500 BACON  
DESCRIPTION: NET FIT  
COMPOUND: RUBBER  
SIZE: 5

NEW



S1439 CIGLIONE  
DESCRIPTION: BLOCKER  
COMPOUND: SOLID RUBBER  
SIZE: 42

NEW



S1437 CIGLIONE  
DESCRIPTION: BLOCKER  
COMPOUND: SOLID RUBBER  
SIZE: 42

NEW



S1576 FISH & CHIPS  
DESCRIPTION: NET FIT  
COMPOUND: RUBBER  
SIZE: 32

NEW



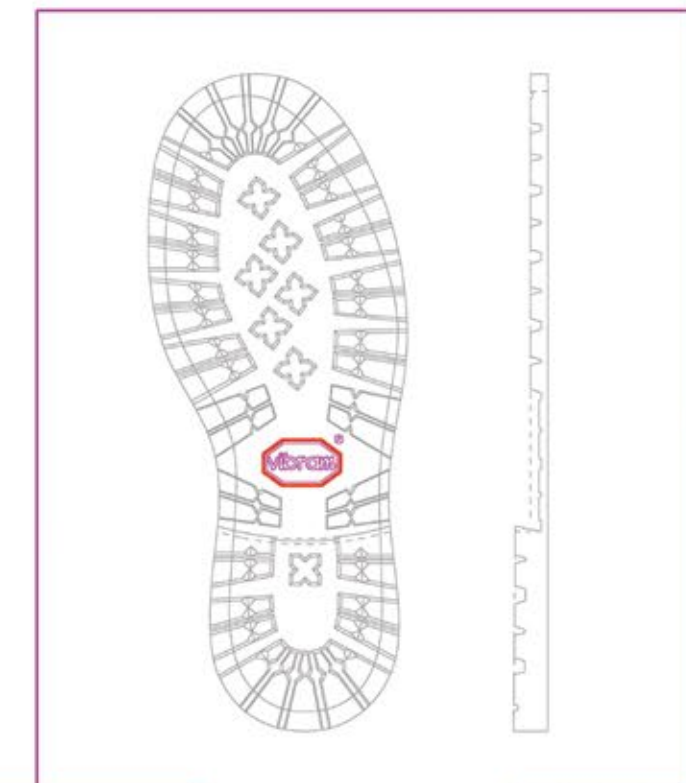
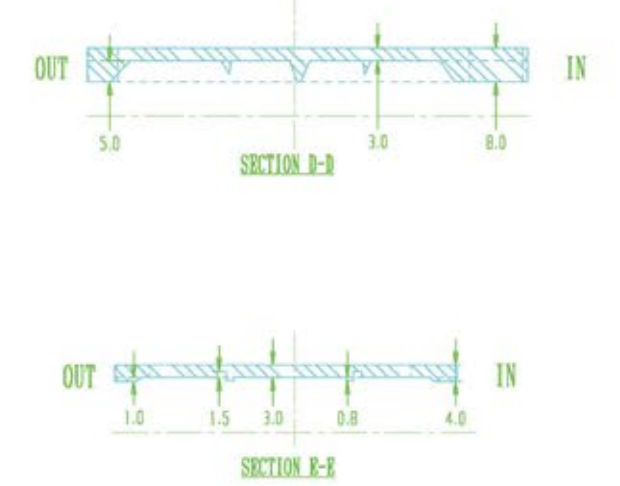
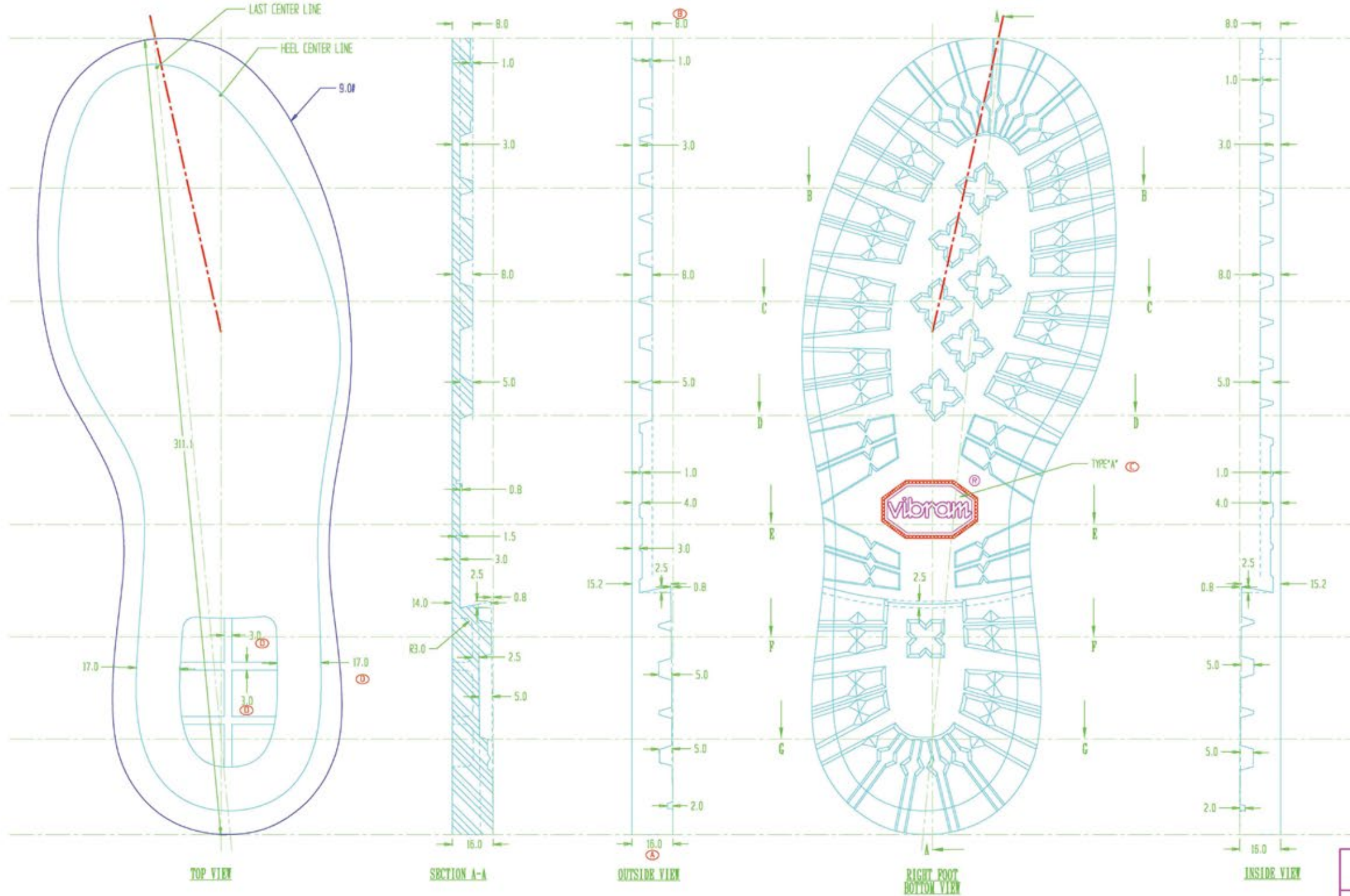
S1475 INVERNESS  
DESCRIPTION: NET FIT  
COMPOUND: RUBBER  
SIZE: 42

NEW



S1508 PRISM  
DESCRIPTION: BLOCKER  
COMPOUND: H-EVA  
SIZE: 11





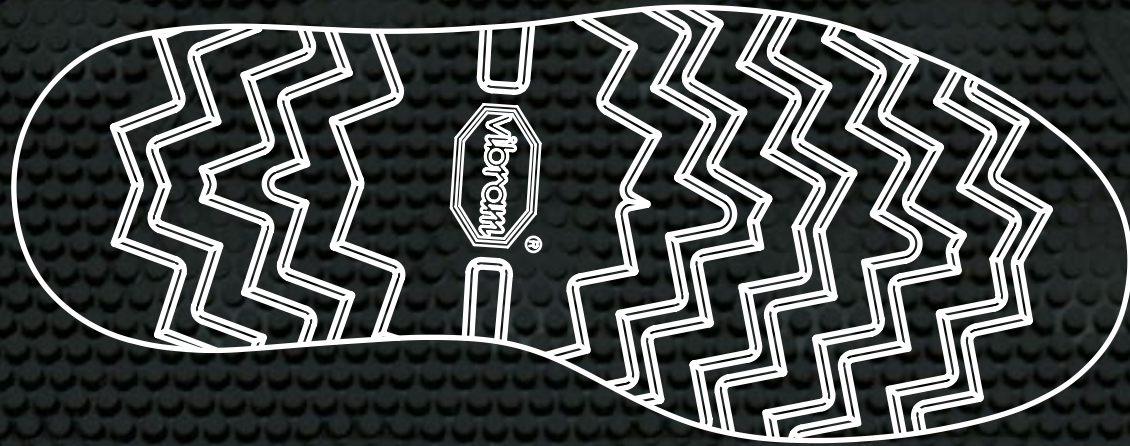
B/P approved for mass production sizes only

RB	Project #: SSS4(ART-1009)	 <p>This document contains information, plans and design which are exclusive proprietary of VIBRAM S.p.A and of highly confidential and secret nature, as provided by art.8 bis of Italian Patent Law. It is prohibited for anyone to disclose, copy, distribute or use the contents of such document without the prior written approval of VIBRAM S.p.A.</p>
	Production #: 171C	
	Project Name: Marnalada	
	Customer: Open	
	Material shrinkage: 8 1.02 <input checked="" type="checkbox"/>	
Lot#: LF13-M16 Shoe Factory: TRD		B/P provided by: YONG HONG

# APPENDIX



**VIBRAM®**  
**CHRISTY THICKNESS GUIDE**  
**COMPOUND: VIBRAM NEWFLEX**



**377B**  
 HEEL: 29.0MM FOREPART:12.0MM



**377K**  
 HEEL: 26.0MM FOREPART:12.0MM



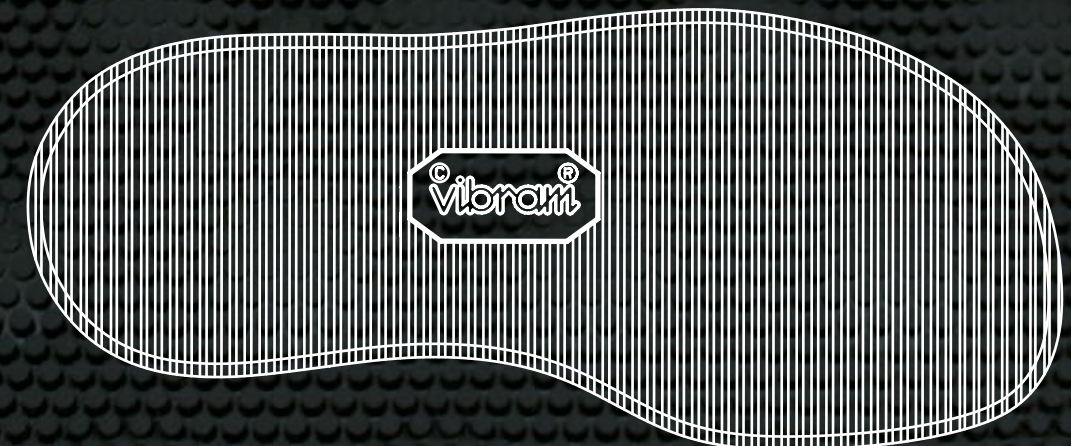
**950B**  
 HEEL: 14.0MM FOREPART:8.0MM



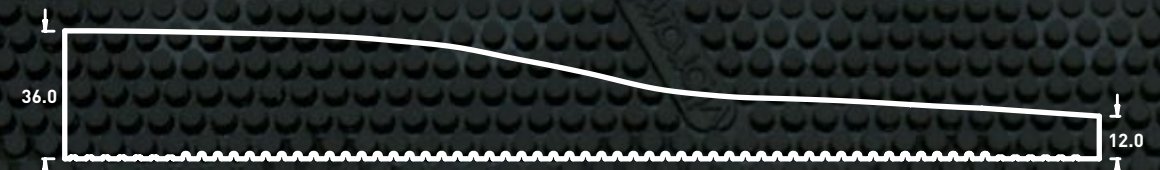
**950K**  
 HEEL: 23.0MM FOREPART:10.5MM



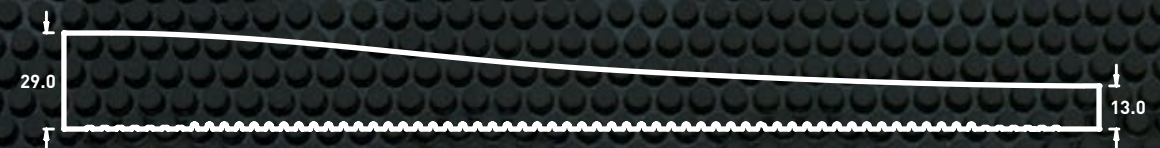
**VIBRAM®**  
**FITTER THICKNESS GUIDE**  
**COMPOUND: VIBRAM MORFLEX EVA**



**271K**  
 HEEL: 36MM FOREPART:12.0MM



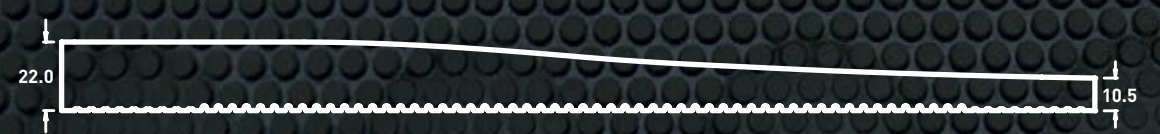
**271P**  
 HEEL: 29MM FOREPART:13.0MM



**271Z**  
 HEEL: 15MM FOREPART:15.0MM



**S219**  
 HEEL: 22MM FOREPART:10.5MM

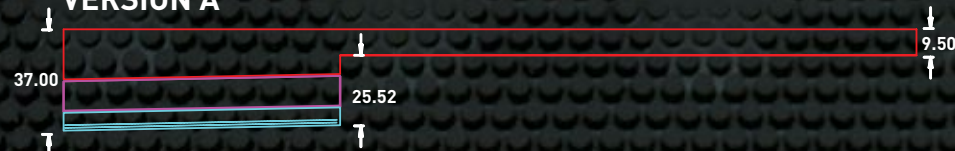




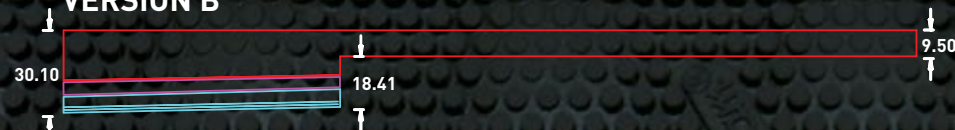
**VIBRAM®**  
**516K / Q276**  
**LONG HAUL**



**VERSION A**



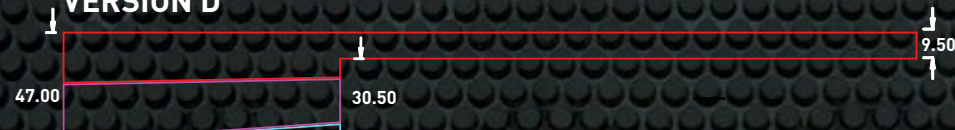
**VERSION B**



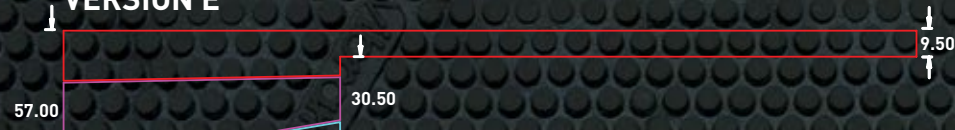
**VERSION C**



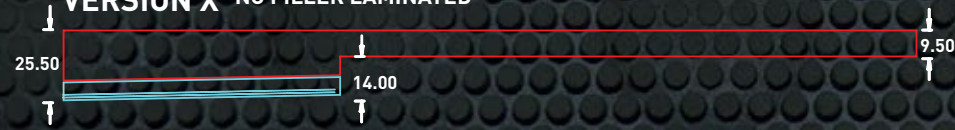
**VERSION D**



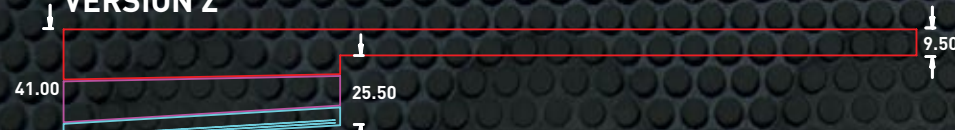
**VERSION E**



**VERSION X NO FILLER LAMINATED**



**VERSION Z**



**PURCHASE ORDER INSTRUCTIONS**

To speed the production and delivery of your orders, we ask for your cooperation in providing ALL of the information below on your purchase orders:

1. Vendor information:
  - a. Name: Vibram S.p.A
  - b. Address: Via C.Colombo 5 21041 ALBIZZATE(Va)-Italy
  - c. Production Order email: po.a@vibrampspa.it
2. Purchaser company name and payer name: The complete name and address must match the company name from which we receive the orders and invoice; otherwise a formal certification is necessary to prove the payment relation.
3. End-brand customer name: Not the shoe factory or trading company name, but the name of shoe brand.
4. PO Details:
  - a) PO#: Any combination of letters or numbers that you choose
  - b) Vibram Article number: i.e., Q151, S219, 207K, etc. Please check with your Vibram representative to confirm article numbers
  - c) Vibram Compound name: Must be indicated on every PO for each item requested. Please contact your Vibram representative with compound questions.
  - d) Size run: Please indicate the Vibram MOLD size that you need, not the shoe size
  - e) Quantity
  - f) Color combination: Please clearly define the order requirements for color; a simple description, i.e., "grey," is not enough identification. Indicate colors using Pantone numbers and color maps:
    - i. Outsole: bottom base/toe area/logo/sidewall logo – black/19-2430TPX/yellow/yellow
    - ii. Midsole: grey, 14-0002TPX
    - iii. TPU: 19-1015TPX
  - g) Hang Tags: Free of charge, one piece per pair, arrange along with goods. Request your need in PO, if any.
5. Shipment Arrangement,
  - a. Consignee name, address, contact person, phone number, email address.
  - b. Forwarder name, address, contact person, phone number. Term is ex-works. Please inform us of your appointed shipping forwarder as soon as possible arrange everything before goods ready.
  - c. Shipment method: by sea, air, or express.
  - d. Special requests, if any.

Please don't hesitate to contact us or your Vibram representatives for assistance. We appreciate your understanding and cooperation.


Thank you for your support of Vibram products.



	COMPOUND MKT NAME (COMPOUND FAMILY)	PRODUCTION NAME COMPOUNDS IN
SPORT & OUTDOOR COMPOUND	XS GRIP	XS GRIP
	XS GRIP <sup>2</sup>	XS GRIP <sup>2</sup>
	XS EDGE	XS EDGE
	XS FLASH	XS FLASH
	IDROGRIP	IDROGRIP BLACK/COLOR IDROGRIP 65A
	ICETREK	ICETREK ICETREK2 (NO GLITTER) BUTS
	WAVEGRIP	ICETREK2 (NO GLITTER)
	MEGAGRIP	MEGAGRIP MEGAGRIP BR10 SUPERTREK
	MONT	MONT SNOW TOP 85 59 Series DURATREK / COLOR
	XS TREK	XS TREK TC1 TC1 DURA TC1 PLUS TCS PLUS TRONT (EU) EURO (EU)
XS RUN	ICETREK2 (NO GLITTER)	
WORK & SAFETY COMPOUND	FIRE&ICE	FIRE&ICE FIRE&ICE ANTISTATIC
	FLAME	316 FIRE 3A
	SUPERWORK	SUPERWORK SUPERWORK ANTISTATIC
	TC4 PLUS	TC4 TC4 PLUS TC4 PLUS ANTISTATIC MILIT1 RANGER
	OR+	15 Series Military FR ANTIOLIO LA (OR) 29 and 21 SERIES NITRILE
	ESD	ESD
	XSWORK	XSWORK XSWORK ANTISTATIC

DRESS&CASUAL COMPOUND	CITYPLUS	VERSA SO SP SB MS 68 and 38 Series V CLEAR
	XSCITY	XSCITY
	GUMLITE	GUMLITE/3D GUMLITE IP
	VI LITE	VI LITE IU PLUS VI-MF NEWFLEX/3D MORFLEX EPX
GENERIC	ECOSTEP	CTEF CTEC ECOSTEP/PLUS (50%) BIO65 ECOTPU ECO XS TREK ECO MORFLEX ECO NEWFLEX





**Vibram S.p.A (Headquarters)**

Via C. Colombo, 5 - 21041 Albizzate (VA) - ITALY  
Tel. +39.0331.999.777 - fax. +39.0331.992.572 | [vibram@vibram.com](mailto:vibram@vibram.com)

**Vibram USA**

Damon Mill Square, Suite H3 - Concord (MA) 01742 - USA  
Tel. +1.978.318.0000 - fax. +1.978.318.9245 | [sales@vibram.com](mailto:sales@vibram.com)

**Vibram RUBBER (Vibram Technology Center)**

Fengshen Avenue 257, Auto City, - Xinhua Town, Huadu, Guangzhou  
GUANG DONG 510800 - CHINA  
Tel. +86.20.86732333 - fax. +86.20.86732199 | [vibram@vibram.cn](mailto:vibram@vibram.cn)

**Vibram BRASIL**

Rua Frei Gregorio Gil No.7, Bairro : Estacao CEP 14405-213 - BRASIL  
Tel. +55.16.37250922 - fax.+55.16.37250922 | [vibram@netsite.com.br](mailto:vibram@netsite.com.br)

**Vibram JAPAN**

Burex Kyobashi 513 - 2-7-14 Kyobashi, Chuo-ku, - Tokyo 104-0031 - JAPAN  
Tel. +81.03.6228.7246 - fax. +81.03.6228.7247 | [kumiko.sanada@vibram.jp](mailto:kumiko.sanada@vibram.jp)